

nucleon



POWER BEYOND LIMITS

OPUS® X4 PROFILE

1400W LED SPOT PROFILE MOVING HEAD

www.cameolight.com/opusX4

for lumēn beings



Arolla

EIN VOLLAUSGESTATTETER IP66
HOCHLEISTUNGSSCHEINWERFER MIT
BLENDENSCHIEBERMODUL.



Der Arolla Aqua ist ein wahres
Arbeitstier und trotz IP66 und
hervorragender Lichtleistung
(900W | 7000K | 40.000lm)
vergleichsweise leicht und kompakt.

In großer Stückzahl bei **NICLEN** verfügbar.

VISION 

www.claypak.com
www.visiontwo.de



L I G H T I N G | V I D E O | A U D I O | R I G G I N G

Hi there,

Thank you for taking time to have a look into our latest rental catalogue. Before you start skimming: Should you have any questions regarding the products, please don't hesitate to contact us directly. We are happy to help you out!

Now some facts about us: NicLen and publitec, based in Dortmund (Germany), combined forces in 2019 and since then offer you the full portfolio of event technology – at high quality and in large quantities. We as dry-hire specialists have gathered years of experience in the areas of professional lighting, video and audio technology as well as rigging. With locations in the UK, the Netherlands, Switzerland and France our mission is to solve all your problems at once.

Do you have issues with transportation? We have our own logistics system - built for your needs.
Do you need more manpower or expertise on site? Our video technicians are there for you.
Are you rather looking for used equipment at a small price? You can find it at our market place.
Do you have a rental park of your own and seek assistance in maintaining it? Our repair service will gladly do it for you.
If you are looking to buy event technology, publitec is your partner.

You can find out more about the individual members of the NicLen Family at www.niclenfamily.com.

Cheers,

The NicLen Family

Hallo,

schön, dass Du Dir die Zeit nimmst, durch unseren aktuellen Mietkatalog zu stöbern. Solltest Du Fragen zu den einzelnen Produkten oder unseren Dienstleistungen haben, ruf uns gerne direkt an.

Vorab ein paar Infos über uns: NicLen und publitec haben ihren Sitz in Dortmund und bieten Dir seit 2019 zusammen das komplette Line-up der professionellen Veranstaltungstechnik - also Licht-, Video-, Audio- und Rigging-Equipment an. In bester Qualität und zu großen Stückzahlen. Wir sind Dry-Hire Spezialisten mit ganz viel Herzblut und möchten, dass Du in jeder Hinsicht von unserer jahrelangen Erfahrung profitierst. Mit weiteren Standorten in der UK, den Niederlanden, der Schweiz und Frankreich ist es daher unsere Mission, Dein Problemlöser in allen Belangen rund ums Event zu sein.

Gibt es Probleme beim Transport Deiner Technik? Wir haben unser eigenes Logistiksystem und Du eine Sorge weniger.
Brauchst Du technischen Support auf der Baustelle? Unsere Videoexperten mischen sich unsichtbar unter Dein Team und unterstützen Dich zuverlässig.
Suchst Du nach gebrauchter Eventtechnik zu kleinen Preisen? Schau doch mal bei Rudi Deluxe vorbei.
Hast Du einen eigenen Mietpark und möchtest sichergehen, dass Deine Technik immer im perfekten Zustand ist? Unser Reparatur- und Wartungsservice kümmert sich.
Falls Du Veranstaltungstechnik kaufen möchtest, ist publitec Dein Partner.

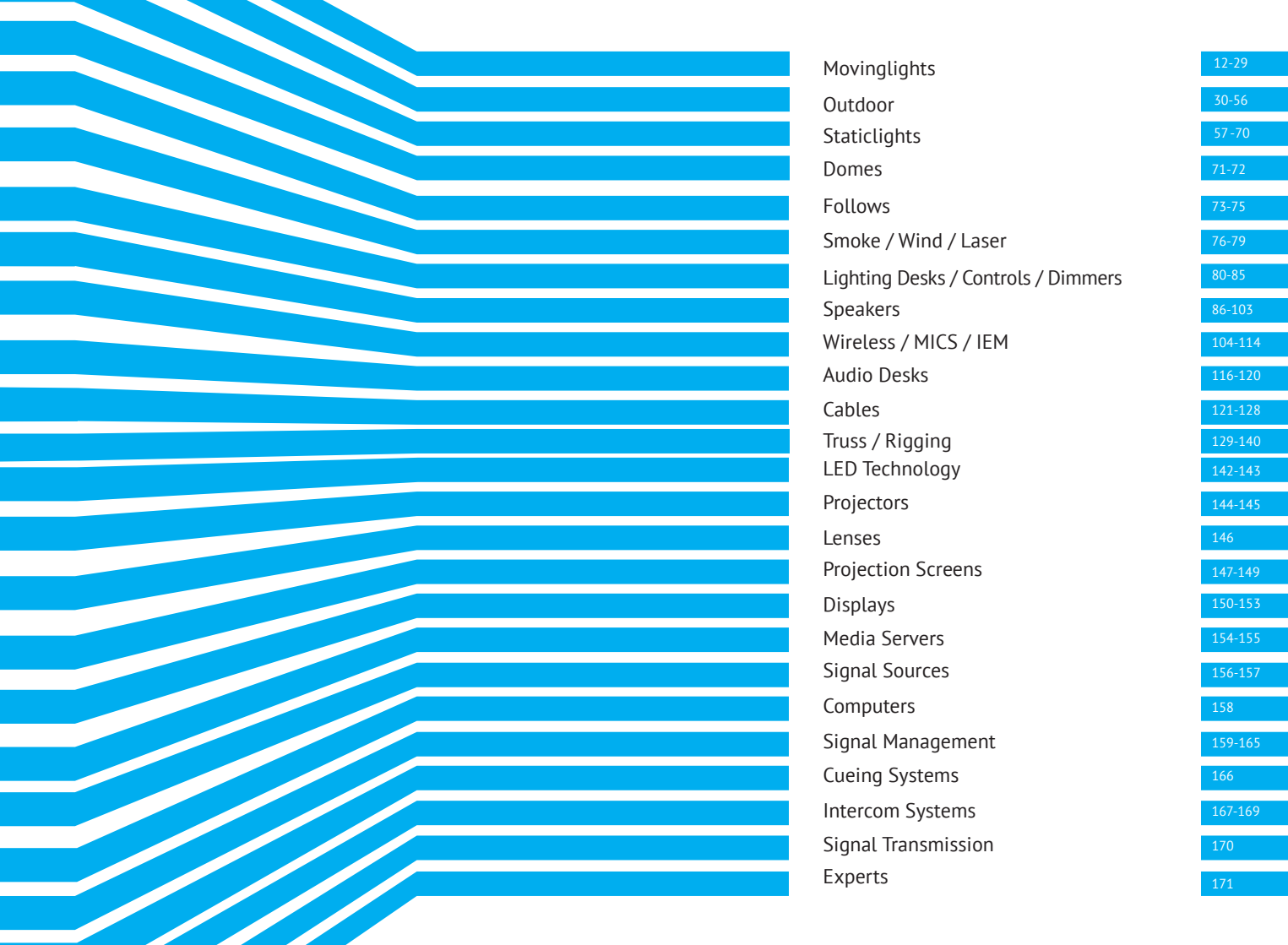
Mehr über die einzelnen Mitglieder der NicLen Family erfährst du auf www.niclenfamily.de.

Wir freuen uns, von Dir zu hören!

Deine NicLen Family

This catalogue was printed climate neutrally. The certificate can be provided on request.

*The General Terms and Conditions of NicLen Gesellschaft für Elektronik, Handel und Vermietung mbH apply. You can find the GTC here: www.niclen.de/en/gtc
As of 01/2025 V1 | Subject to errors and technical changes.*



Manufacturer	Fixture	Category	Power Connection	DMX	Gobo Size	Channel
Arri	L7 TT	Staticlight	Schuko	5 Pin		1-6
Arri	L7 C	Staticlight	Schuko	5 Pin		1-16
Astera	FP3 Hyperion Tube	Staticlight	Power Supply Unit	5 Pin		
Astera	FP2 Helios Tube	Staticlight	Power Supply Unit	5 Pin		3-112
Astera	FP1 Titan Tube	Staticlight	Power Supply Unit	5 Pin		3-112
Astera	AX5	Staticlight	Schuko > PowerCON TRUE1	5 Pin		1-21
Astera	AX9	Staticlight	Schuko > PowerCON TRUE1	3 Pin 5 Pin		3-21
Astera	AX 2-50	Staticlight	Schuko > PowerCON TRUE1	5 Pin		3-72
Astera	AX 2-100	Staticlight	Schuko > PowerCON TRUE1	5 Pin		3-72
Astera	NYX Bulb	Staticlight				2-8
Ayrton	Rivale Profile	Movinglight	Schuko > PowerCON TRUE1	5 Pin	25,5 18,0	65
Cameo	Azor S2	Movinglight	Schuko > PowerCON TRUE1	5 Pin	16,5 10,5	21-28
Cameo	Azor SP2	Movinglight	Schuko > PowerCON TRUE1	5 Pin	16,5 10,5	32-43
Cameo	MOVO BEAM 200	Movinglight	Schuko > PowerCON	3 Pin 5 Pin		15- 89
Cameo	OPUS H5	Movinglight	Schuko > PowerCON	3 Pin 5 Pin	17,0 12,0	27-36
Cameo	OTOS H5	Movinglight	Schuko > PowerCON TRUE1	3 Pin 5 Pin		
Cameo	OPUS X Profile	Movinglight	Schuko > PowerCON	3 Pin 5 Pin	30,0 25,0	37-55
Cameo	OPUS SP5 Profile	Movinglight	Schuko > PowerCON	3 Pin 5 Pin	22,9 19,0	34-50
Cameo	ORON H2	Movinglight	Schuko > PowerCON TRUE1	5 Pin	7,5 4	24-33
Cameo	OPUS X4 Profile	Movinglight	Schuko > PowerCON TRUE1	3 Pin 5 Pin	30 25	34-56
Cameo	Azor B1	Movinglight	Schuko > PowerCON	3 Pin 5 Pin	30,6 22,0	13-16
Cameo	OPUS S5 Spot	Movinglight	Schuko > PowerCON TRUE1	3 Pin 5 Pin	22,9 19,0	27-33
Cameo	EVOS W7	Movinglight	Schuko > PowerCON TRUE1	3 Pin 5 Pin	42,1 48,2	16-87
Cameo	EVOS W3	Movinglight	Schuko > PowerCON TRUE1	Artnet 5 Pin	29,0 35,0	18-43
Cameo	ZENIT® W300	Staticlight	Schuko > PowerCON TRUE1	5 Pin		2-15
Cameo	ZENIT® B200	Staticlight	Schuko > PowerCON TRUE1	5 Pin		2-15
Cameo	F4T	Staticlight	Schuko > PowerCON TRUE1	5 Pin		1-5
Cameo	F4FC	Staticlight	Schuko > PowerCON TRUE1	5 Pin		1-11
Cameo	F4D	Staticlight	Schuko > PowerCON TRUE1	5 Pin		1-5

Manufacturer	Fixture	Lamp	Power Connection	DMX	Gobo Size	Channel
Cameo	F2T	Staticlight	Schuko > PowerCON TRUE1	5 Pin		1-5
Cameo	F2FC	Staticlight	Schuko > PowerCON TRUE1	5 Pin		10
Cameo	F2D	Staticlight	Schuko > PowerCON TRUE1	5 Pin		1-5
Cameo	F1D	Staticlight	Schuko > PowerCON TRUE1	5 Pin		1-5
Cameo	F1T	Staticlight	Schuko > PowerCON TRUE1	5 Pin		1-5
Cameo	ZENIT® W600	Staticlight	Schuko > PowerCON TRUE1	5 Pin		2-15
Cameo	ZENIT® W600 SMD	Staticlight	Schuko > PowerCON TRUE1	5 Pin		2-15
Cameo	ZENIT® P130	Staticlight	Schuko > PowerCON TRUE1	5 Pin		2-15
Cameo	ZENIT® B60	Staticlight	Schuko > PowerCON TRUE1	5 Pin		2-15
Cameo	ZENIT® Z180 G2	Staticlight	Schuko > PowerCON TRUE1	5 Pin		3-17
Cameo	FLAT PRO 7 G2	Staticlight	Schuko > PowerCON TRUE1	3 Pin		2-14
Cameo	FLAT PRO 12 G2	Staticlight	Schuko > PowerCON TRUE1	3 Pin		2-14
Cameo	DROP® B1	Staticlight				9
Cameo	PIXBAR® 400 IP G2	Staticlight	Schuko > PowerCON TRUE1	5 Pin		1-68
Cameo	PIXBAR® SMD IP G2	Staticlight	Schuko > PowerCON TRUE1	5 Pin		6-116
Chauvet	COLORado PXL Curve 12	Staticlight	Schuko > PowerCON TRUE1	5 Pin		20-179
Chauvet	STRIKE Array 2	Staticlight	Schuko > PowerCON	5 Pin		1-8
Chauvet	STRIKE Array 4	Staticlight	Schuko > PowerCON	5 Pin		1-10
Clay Paky	Arolla Aqua	Movinglight	Schuko > PowerCON TRUE1	5 Pin	26,95 20,5	38
Clay Paky	Panify	Movinglight	Schuko > PowerCON TRUE1	5 Pin		5
Clay Paky	Sharpy Wash 330	Movinglight	Schuko	3 Pin 5 Pin		22
Clay Paky	Sharpy	Movinglight	Schuko > PowerCON	3 Pin 5 Pin		20
Clay Paky	Scenius Unico	Movinglight	Schuko > PowerCON TRUE1	5 Pin	32,8 23,0	40-44
Clay Paky	Scenius Profile	Movinglight	Schuko > PowerCON TRUE1	5 Pin	32,8 23,0	37-41
Clay Paky	Tambora Batten	Movinglight	Schuko > PowerCON TRUE1	5 Pin	10,5 28,8	48-64
Clay Paky	Xtylos Mini HPE	Movinglight	Schuko > PowerCON TRUE1	5 Pin		27
Clay Paky	Xtylos Aqua	Movinglight	Schuko > PowerCON TRUE1	5 Pin	11,0 25,0	31
Clay Paky	Midi-B	Movinglight	Schuko > PowerCON TRUE1	5 Pin		17-37
Clay Paky	HY B-Eye K25	Movinglight	Schuko > PowerCON	3 Pin 5 Pin		21-35

Manufacturer	Fixture	Lamp	Power Connection	DMX	Gobo Size	Channel
Clay Paky	Stormy	Staticlight	Schuko > PowerCON TRUE1	5 Pin		3-6
Clay Paky	ReflectXion	Movinglight	Schuko > PowerCON TRUE1	5 Pin		6
Coemar	LEDco Fullspectrum HD6	Staticlight	Schuko > PowerCON	5 Pin	28,0 40,0	1-16
DVT Light	PJ-5	Movinglight	Schuko > PowerCON TRUE1	5 Pin		44902
Elation	Smarty Hybrid™	Movinglight	Schuko > PowerCON TRUE1	5 Pin	7,0 14,0	20-34
Elation	Proteus Smarty Hybrid IP	Movinglight	Schuko > PowerCON TRUE1	5 Pin	7,0 14,0	20-34
Elation	Proteus Maximus IP™	Movinglight	Schuko > PowerCON TRUE1	5 Pin	25,0 29,8	37-61
Elation	Artiste Monet™	Movinglight	Schuko > PowerCON TRUE1	5 Pin	25,0 29,8	40-67
Elation	CUEPIX Panel	Staticlight	Schuko > PowerCON	3 Pin 5 Pin		3-80
Elation	SIXBAR 1000	Staticlight	Schuko > PowerCON	3 Pin 5 Pin		6-79
Elation	CUEPIX Blinder WW4	Staticlight	Schuko > PowerCON	3 Pin 5 Pin		1-9
Elation	CUEPIX Blinder WW2	Staticlight	Schuko > PowerCON	3 Pin 5 Pin		1-4
Elation	SIXBAR 1000 IP	Staticlight	Schuko > PowerCON TRUE1	5 Pin		6-79
Elation	KL Panel	Staticlight	Schuko > PowerCON TRUE1	5 Pin		9
ExpoLite	TourLED Pro 28 Zoom	Staticlight	Schuko > PowerCON	3 Pin 5 Pin		3-12
ExpoLite	TourStick P4	Staticlight	Schuko > PowerCON	3 Pin		3-16
GLP	X4 Bar 20	Movinglight	Schuko > PowerCON	5 Pin		20-89
GLP	HIGHLANDER Wash	Movinglight	Schuko > PowerCON TRUE1	5 Pin		1-26
GLP	impression FR1	Movinglight	Schuko > PowerCON	5 Pin		1-16
GLP	impression X4 L	Movinglight	Schuko > PowerCON	5 Pin		21-169
GLP	X5	Movinglight	Schuko > PowerCON TRUE1	5 Pin		24-89
GLP	KNV Dot	Staticlight	Schuko > PowerCON TRUE1	5 Pin		10-86
GLP	KNV Line	Staticlight	Schuko > PowerCON TRUE1	5 Pin		10-86
GLP	JDC1	Movinglight	Schuko > PowerCON TRUE1	5 Pin		14-68
GLP	JDC2	Movinglight	Schuko > PowerCON TRUE1	5 Pin		
GLP	Fusion 2	Staticlight	Schuko > PowerCON TRUE1	5 Pin		4-92
GLP	JDC Line 500	Staticlight	Schuko > PowerCON TRUE1	5 Pin		16-158
GLP	FUSION MBL 40	Staticlight	Schuko > PowerCON TRUE1	5 Pin		1-5
GLP	FUSION MBL 20	Staticlight	Schuko > PowerCON TRUE1	5 Pin		1-5
GLP	Creative Light 1+	Staticlight	USB-C			1-75

Manufacturer	Fixture	Lamp	Power Connection	DMX	Gobo Size	Channel
Laser Imageneering	Sunbeam 100 FC	Staticlight	Schuko > PowerCON TRUE1			3-30/60
Martin	MAC Viper Profile	Movinglight	Schuko > PowerCON	5 Pin	37,5 27,0	26-34
Martin	MAC Viper Air FX	Movinglight	Schuko > PowerCON	5 Pin	37,5 27,0	20-28
Martin	MAC Viper Wash DX	Movinglight	Schuko > PowerCON	5 Pin		18-24
Martin	MAC Viper Performance	Movinglight	Schuko > PowerCON	5 Pin	37,5 27,0	32-40
Martin	MAC Axiom Hybrid	Movinglight	Schuko > PowerCON TRUE1	5 Pin	13,9 9,0	23
Martin	Atomic 3000	Movinglight	Schuko	3 Pin 5 Pin		1-4
Martin	MAC Quantum Wash	Movinglight	Schuko > PowerCON	5 Pin		17-33
Martin	MAC Aura	Movinglight	Schuko > PowerCON	5 Pin		14-25
Martin	MAC One	Movinglight	Schuko > PowerCON TRUE1	5 Pin		20-108&20
Martin	MAC Aura XB	Movinglight	Schuko > PowerCON TRUE1	5 Pin		14-25
Martin	MAC Aura PXL	Movinglight	Schuko > PowerCON TRUE1	5 Pin		1-512
Martin	MAC Encore Performace CLD	Movinglight	Schuko > PowerCON TRUE1	5 Pin	37,5 27,0	38
Martin	MAC Ultra Performance	Movinglight	Schuko > PowerCON TRUE1	5 Pin	37,5 30,0	58
Martin	Atomic 3000 LED	Staticlight	Schuko > PowerCON TRUE1	5 Pin		3-14
Martin	VDO Atomic Dot WRM	Staticlight	Schuko > PowerCON TRUE1	5 Pin		1-64
Martin	VDO Atomic Dot CLD	Staticlight	Schuko > PowerCON TRUE1	5 Pin		1-64
Martin	VDO Atomic Bold	Staticlight	Schuko > PowerCON TRUE1	5 Pin		1-243
Portman	S-TRIBETM	Staticlight	Schuko / PowerCON True 1	5 Pin		12-97
Portman	P3 PIX3L	Staticlight	Schuko > PowerCON TRUE1	5 Pin		3
Portman	P2 Hexaline	Staticlight	Schuko > PowerCON TRUE1	3 Pin 5 Pin		6
Portman	P1 Retro Lamp	Staticlight	Schuko > PowerCON	3 Pin 5 Pin		7
Portman	P1 Mini LED	Staticlight	Schuko > PowerCON TRUE1	5 Pin		19-50
Portman	Mantis	Staticlight	Schuko > PowerCON TRUE1	5 Pin		21-43
Prolights	Astra Hybrid330	Movinglight	Schuko > PowerCON TRUE1	5 Pin	20 16	29
Robe	Tetra2TM	Movinglight	Schuko > PowerCON TRUE1	5 Pin		34-128
Robe	iFORTE®	Movinglight	Schuko > PowerCON TRUE1	5 Pin	25,5 18,0	54-56
Robe	BMFL™ FollowSpot LT	Movinglight	Schuko > PowerCON	3 Pin 5 Pin	25,0 30,8	27-33
Robe	LEDBeam 350TM	Movinglight	Schuko > PowerCON TRUE1	5 Pin		16-24
Robe	BMFL™ Spot	Movinglight	Schuko > PowerCON	3 Pin 5 Pin	25,0 30,8	33-41

Manufacturer	Fixture	Lamp	Power Connection	DMX	Gobo Size	Channel
Robe	Pointe®	Movinglight	Schuko > PowerCON	3 Pin 5 Pin	15,9 12,5	16-30
Robe	BMFL™ WashBeam	Movinglight	Schuko > PowerCON	3 Pin 5 Pin	25,0 30,8	41-48
Robe	BMFL™ Wash XF	Movinglight	Schuko > PowerCON	3 Pin 5 Pin	25,0 30,8	30-34
Robe	BMFL™ Blade	Movinglight	Schuko > PowerCON	3 Pin 5 Pin	25,0 30,8	42-49
Robe	MegaPointe®	Movinglight	Schuko > PowerCON TRUE1	3 Pin 5 Pin	15,9 12,5	34-39
Robe	iPointe IP®	Movinglight	Schuko > PowerCON TRUE1	3 Pin 5 Pin	15,8 12,9	34-39
Robe	picklePATT™	Staticlight	Schuko			
Robe	PATT 2013™	Staticlight	Schuko			
Robe	LEDWash 800™	Movinglight		3 Pin 5 Pin		11-38
Robe	LEDBeam 150™	Movinglight	Schuko > PowerCON	5 Pin		16-22
Robe	ESPRITE®	Movinglight	Schuko > PowerCON TRUE1	3 Pin 5 Pin	23,5 26,8	42-50
Robe	Spikie®	Movinglight	Schuko > PowerCON TRUE1	5 Pin		21-27
Robe	Spiider®	Movinglight	Schuko > PowerCON TRUE1	3 Pin 5 Pin		27-123
Robe	Tarrantula™	Movinglight	Schuko > PowerCON TRUE1	3 Pin 5 Pin		28-195
Robe	FORTE®	Movinglight	Schuko > PowerCON TRUE1	3 Pin 5 Pin	30,8 25,0	54
Robe	iFORTE® LTX FS	Movinglight	Schuko > PowerCON TRUE1	3 Pin 5 Pin	30,8 25,0	54
Robe	iSpiider IP®	Movinglight	Schuko > PowerCON TRUE1	3 Pin 5 Pin		27-123
ROXX®	E.SHOW TW+	Staticlight	Schuko > PowerCON TRUE1	5 Pin		3-20
ROXX®	E.SHOW FC	Staticlight	Schuko > PowerCON TRUE1	5 Pin		3-16
ROXX®	E.SHOW D	Staticlight	Schuko > PowerCON TRUE1	5 Pin		1-4
ROXX®	CLUSTER B2 W	Staticlight	Schuko > PowerCON TRUE1	5 Pin		1-13
ROXX®	CLUSTER B2 FC	Staticlight	Schuko > PowerCON TRUE1	5 Pin		1-41
ROXX®	CLUSTER B4 W	Staticlight	Schuko > PowerCON TRUE1	5 Pin		1-17
ROXX®	CLUSTER B4 FC	Staticlight	Schuko > PowerCON TRUE1	5 Pin		1-73
ROXX®	B.FLEX & B.FLEX HAT W	Staticlight	Power Supply Unit	5 Pin		3-80
SGM	G-Profile Turbo IP	Movinglight	Schuko > PowerCON TRUE1	5 Pin	37,5 30,0	32-47
SGM	P-10	Staticlight	Schuko > PowerCON TRUE1	5 Pin		4-52
SGM	Q-10	Staticlight	Schuko > PowerCON TRUE1	5 Pin		6-30
SGM	P-6	Staticlight	Schuko > PowerCON TRUE1	5 Pin		4-40
SGM	SP-6	Staticlight	Schuko > PowerCON TRUE1	5 Pin		6-48

Manufacturer	Fixture	Lamp	Power Connection	DMX	Gobo Size	Channel
SGM	Q-7 W	Staticlight	Schuko > PowerCON	5 Pin		1-8
SGM	Q-7	Staticlight	Schuko > PowerCON	5 Pin		4-8
SGM	Q-2 W	Staticlight	Schuko > PowerCON	5 Pin		1-24
SGM	Q-2	Staticlight	Schuko > PowerCON	5 Pin		3-22
SGM	P-5 W	Staticlight	Schuko > PowerCON	5 Pin		1-2
SGM	P-5	Staticlight	Schuko > PowerCON	5 Pin		3-10
Vari*Lite	VL2600 Wash	Movinglight	Schuko > PowerCON TRUE1	5 Pin		29-32
Vari*Lite	VL2600 Profile	Movinglight	Schuko > PowerCON TRUE1	5 Pin	27,0 17,0	41-46
Vari*Lite	VL6000 Beam	Movinglight	Schuko > PowerCON TRUE1	5 Pin	37,5 29,5	23
Vari*Lite	VL5LED Wash	Movinglight	Schuko > PowerCON TRUE1	5 Pin		29-81
Vari-Lite	VL3600 PROFILE IP	Movinglight	Schuko > PowerCON TRUE1	5 Pin	29,8 24	49-54



LED



Package Unit



Schuko



powerCON



powerCON TRUE1



Touch Display



W-DMX



DMX 3 Pin



DMX 5 Pin



IP Class



Battery Powered



Shutter Blade



Konkurrenzlos Gut.



AYRTON
Digital Lighting



Die neue
Ultimate Serie
von Ayrton

*Auch hier im
Niclén Mietpark*



Stradale
Profile

Rivale
Profile

Veloce
Profile

Brutale
Profile

BT.innotec

Rothenberger Str. 52 | 48493 Wettringen | info@btinnotec.de | 025 57/9 99 90 88



Fixture	FORTE®
Manufacturer	Robe
Type	Profile
Lamp	1.000W LED
Power Consumption	1.250W
Weight	39,8kg
Special/Zoom	5°-55° / CRI: 70-90



Fixture	MAC Ultra Performance
Manufacturer	Martin
Type	Profile
Lamp	1.150W LED
Power Consumption	1.380W
Weight	44kg
Special/Zoom	8°-54° / CRI: 66-90



Fixture	OPUS X4 Profile
Manufacturer	Cameo
Type	Spot
Lamp	1.400W
Weight	43kg
Special/Zoom	5,5°-56°



Fixture	Artiste Monet™
Manufacturer	Elation
Type	Profile
Lamp	950W LED
Power Consumption	1.400W
Weight	42,6kg
Special/Zoom	6,8°-55° / CRI: 72-84





Fixture **ESPRITE™**

Manufacturer	Robe
Type	Profile
Lamp	650W LED
Power Consumption	950W
Weight	27,8kg
Special/Zoom	5,5°-50°



Fixture **OPUS X Profile**

Manufacturer	Cameo
Type	Profile
Lamp	750W LED
Power Consumption	1.100W
Weight	42kg
Special/Zoom	6°-48°



Fixture **Scenius Profile**

Manufacturer	Clay Paky
Type	Profile
Lamp	1.400W
Power Consumption	1.800W
Weight	41kg
Special/Zoom	7°-48°



Fixture **BMFL™ Blade**

Manufacturer	Robe
Type	Profile
Lamp	1.700W
Power Consumption	2.000W
Weight	37,9kg
Special/Zoom	5°-55°





MAC Viper Performance

Fixture

Manufacturer	Martin
Type	Profile
Lamp	1.000W
Power Consumption	1.186W
Weight	37,9kg
Special/Zoom	10°-44°



MAC Encore Performance CLD

Fixture

Manufacturer	Martin
Type	Profile
Lamp	468W
Power Consumption	580W
Weight	31kg
Special/Zoom	12°-48°



OPUS SP5

Fixture

Manufacturer	Cameo
Type	Profile
Lamp	500W
Power Consumption	800W
Weight	27,8kg
Special/Zoom	6°-42°



VL2600 Profile

Fixture

Manufacturer	Vari*Lite
Type	Profile
Lamp	550W
Power Consumption	820W
Weight	32kg
Special/Zoom	7°-48°



Fixture **AZOR SP2**

Manufacturer	Cameo
Type	Spot
Lamp	300W
Power Consumption	550W
Weight	24kg
Special/Zoom	3°-50°



Fixture **Azor S2**

Manufacturer	Cameo
Type	Spot
Lamp	300W
Power Consumption	470W
Weight	19,7kg
Special/Zoom	5°-50°





Fixture	BMFL™ Spot
Manufacturer	Robe
Type	Spot
Lamp	1.700W
Power Consumption	2.000W
Weight	36kg
Special/Zoom	5°-55°



Fixture	MAC Viper Profile
Manufacturer	Martin
Type	Spot
Lamp	1.000W
Power Consumption	1.186W
Weight	37,2kg
Special/Zoom	135° Animation FX



Fixture	OPUS S5
Manufacturer	Cameo
Type	Spot
Lamp	380W
Power Consumption	650W
Weight	24kg
Special/Zoom	6°-46°



Fixture	HIGHLANDER Wash
Manufacturer	GLP
Type	Wash
Lamp	1.400W
Power Consumption	1.750W
Weight	29,5kg
Special/Zoom	5°-60°



Fixture	BMFL™ WashXF
Manufacturer	Robe
Type	Wash
Lamp	1.700W
Power Consumption	2.000W
Weight	35kg
Special/Zoom	4,5°-55°



Fixture	VL2600 Wash
Manufacturer	Vari*Lite
Type	Wash
Lamp	550W
Power Consumption	820W
Weight	30,2kg
Special/Zoom	12°-63°



Fixture	MAC Viper WashDX
Manufacturer	Martin
Type	Wash
Lamp	1.000W
Power Consumption	1.186W
Weight	34,1kg
Special/Zoom	Barndoors, Linear CTO





Fixture **VL5LED Wash**

Manufacturer	Vari*Lite
Type	Wash
Lamp	1.080W
Power Consumption	1.320W
Weight	23,5kg
Special/Zoom	2.700-7.000K



Fixture **Sharpy Wash**

Manufacturer	Clay Paky
Type	Wash
Lamp	330W
Power Consumption	500W
Weight	18,5kg
Special/Zoom	6,5°- 48°



Fixture **VL6000 Beam**

Manufacturer	Vari*Lite
Type	Beam
Lamp	1.500W
Power Consumption	2.140W
Weight	28kg
Special/Zoom	Ellipsoid Reflector



Fixture **BMFL™ WashBeam**

Manufacturer	Robe
Type	Wash Beam
Lamp	1.700W
Power Consumption	2.000W
Weight	38,4kg
Special/Zoom	5°-45°



Fixture **Scenius Unico**

Manufacturer	Clay Paky
Type	Wash Beam
Lamp	1.400W
Power Consumption	1.800W
Weight	45,6kg
Special/Zoom	5°-55°



Fixture **MAC Viper AirFX**

Manufacturer	Martin
Type	Hybrid
Lamp	1.000W
Power Consumption	1.168W
Weight	35,7kg
Special/Zoom	Mid-Air Effects





Fixture **MegaPointe®**

Manufacturer	Robe
Type	Hybrid
Lamp	470W
Power Consumption	670W
Weight	22kg
Special/Zoom	Multifunctional



Fixture **Pointe®**

Manufacturer	Robe
Type	Hybrid
Lamp	280W
Power Consumption	670W
Weight	15kg
Special/Zoom	Multifunctional



Fixture **OPUS H5**

Manufacturer	Cameo
Type	Hybrid
Lamp	470W
Power Consumption	700W
Weight	27kg
Special/Zoom	Multifunctional



Fixture **Smarty Hybrid™**

Manufacturer	Elation
Type	Hybrid
Lamp	280W
Power Consumption	480W
Weight	22,2kg
Special/Zoom	Multifunctional





Fixture **Sharpy Beam**

Manufacturer	Clay Paky
Type	Beam
Lamp	330W
Power Consumption	350W
Weight	19kg
Special/Zoom	1°-3,8°



Fixture **Astra Hybrid330**

Manufacturer	Prolights
Type	Hybrid
Lamp	330W LED
Power Consumption	517W
Weight	21,6kg
Special/Zoom	3,5° - 52°



Fixture **MAC Axiom Hybrid**

Manufacturer	Martin
Type	Hybrid
Lamp	440W
Power Consumption	600W
Weight	24,8kg
Special/Zoom	2°-44°



Fixture **Mini Xtylos HPE**

Manufacturer	Clay Paky
Type	Beam
Lamp	20W Laser Engine
Power Consumption	90W
Weight	9kg
Special/Zoom	1°-4°



Fixture	Azor B1
Manufacturer	Cameo
Type	Beam
Lamp	100W LED
Power Consumption	180W
Weight	13,9kg
Special/Zoom	9.200K



Fixture	Spikie®
Manufacturer	Robe
Type	Beam
Lamp	60W LED
Power Consumption	100W
Weight	7,3kg
Special/Zoom	4°-28° / 3 facet Prism



Fixture	LEDBeam 150™
Manufacturer	Robe
Type	Beam
Lamp	280W LED
Power Consumption	220W
Weight	5,7kg
Special/Zoom	3,8°-60°



Fixture	LEDBeam 350™
Manufacturer	Robe
Type	Beam
Lamp	12x40W LED
Power Consumption	450W
Weight	9,9kg
Special/Zoom	3,8° -60°



Fixture **EVOS W3**

Manufacturer	Cameo
Type	Wash
Lamp	7x 40W LED
Power Consumption	325W
Weight	7,8kg
Special/Zoom	4,5°-55°



Fixture **impression FR1**

Manufacturer	GLP
Type	Beam
Lamp	60W LED
Power Consumption	85W
Weight	4kg
Special/Zoom	3,7°-34°



Fixture **MOVO BEAM 200**

Manufacturer	Cameo
Type	Beam
Lamp	60W
Power Consumption	120W
Weight	8kg
Special/Zoom	2°-120°



Fixture **MAC One**

Manufacturer	Martin
Type	Hybrid
Lamp	160W
Power Consumption	180W
Weight	4,4kg
Special/Zoom	4°-27°





Fixture	HY B-Eye K25
Manufacturer	Clay Paky
Type	Wash, Beam
Lamp	37x40W
Power Consumption	1.250W
Weight	27,5kg
Special/Zoom	4°-60°



Fixture	MAC Quantum Wash
Manufacturer	Martin
Type	Wash
Lamp	50x 15W LED
Power Consumption	856W
Weight	21kg
Special/Zoom	BEAM Twister / Variable CTO



Fixture	Tarrantula™
Manufacturer	Robe
Type	Wash
Lamp	1x 60W + 36x 40W LED
Power Consumption	1.000W
Weight	21,2kg
Special/Zoom	4°-50°



Fixture	Impression X5
Manufacturer	GLP
Type	Wash
Lamp	19x 40W LED
Power Consumption	710W
Weight	13,3kg
Special/Zoom	3,5°-60°



MIDI **B**

KOMPAKTES, VIELSEITIGES UND
EXTREM LEISTUNGSSTARKES
WASH- BZW. BEAM-MOVINGLIGHT.



Midi-B überzeugt mit exzellenten
Farben, einem enormen Output, einer
homogenen Ausleuchtung, einem
Zoom-Bereich von 4°- 50° und mit
seiner enormen Schnelligkeit.

In großer Stückzahl bei **NICLEN** verfügbar.

VISION²

www.claypaky.com
www.visiontwo.de



Fixture	impression X4 L
Manufacturer	GLP
Type	Wash
Lamp	37x 15W LED
Power Consumption	900W
Weight	17kg
Special/Zoom	7°-50° / Pixelmapping



Fixture	Midi-B
Manufacturer	Clay Paky
Type	Wash
Lamp	19x40W
Power Consumption	830W
Weight	17kg
Special/Zoom	4°-50°



Fixture	Spiider®
Manufacturer	Robe
Type	Wash
Lamp	1x 60W + 18x 40W LED
Power Consumption	600W
Weight	13,3kg
Special/Zoom	4°-50°



Fixture	MAC Aura PXL
Manufacturer	Martin
Type	Wash
Lamp	19x 40W LED
Power Consumption	560W
Weight	15,6kg
Special/Zoom	7°-59°





Fixture **MAC Aura XB**

Manufacturer	Martin
Type	Wash
Lamp	19x 15W LED
Power Consumption	349W
Weight	6,5kg
Special/Zoom	10°-60°



Fixture **LEDWash 800™**

Manufacturer	Robe
Type	Wash
Lamp	37x 15W LED
Power Consumption	430W
Weight	11,5kg
Special/Zoom	8°-63°



Fixture **MAC Aura**

Manufacturer	Martin
Type	Wash
Lamp	19x 10W LED
Power Consumption	228W
Weight	5,6kg
Special/Zoom	Eye Candy Effect



Fixture **EVOS W7**

Manufacturer	Cameo
Type	Wash Beam
Lamp	19x 40W LED
Power Consumption	900W
Weight	23,5kg
Special/Zoom	4,5°-55°





Impression X4 Bar 20

Fixture	
Manufacturer	GLP
Type	Bar
Lamp	20x 15W LED
Power Consumption	400W
Weight	16kg
Special/Zoom	7°-50°



Tambora Batten

Fixture	
Manufacturer	Clay Paky
Type	Bar
Lamp	16x 40W LED
Power Consumption	660W
Weight	15,5kg
Special/Zoom	4°-53°



Tetra2™

Fixture	
Manufacturer	Robe
Type	Bar
Lamp	18x 40W LED
Power Consumption	600W
Weight	18,1kg
Special/Zoom	4,5°-45°





Fixture	ReflectXion
Manufacturer	Clay Paky
Type	Moving Mirror
Power Consumption	100W
Weight	13,5kg
Special/Zoom	99% Reflectance, Double Sided



Fixture	Panify
Manufacturer	Clay Paky
Type	Moving Base
Power Consumption	150W
Weight	13,8kg
Special/Zoom	22-50RPM

31



Fixture	JDC1
Manufacturer	GLP
Type	Strobe / Blinder
Lamp	1.320x OSRAM LRTB RGB + 216x CREE XP L Cool White
Power Consumption	1.200W
Weight	11,5kg
Special/Zoom	Motorized Tilt (180°), 2 Separate Lightsources



Fixture **Proteus Maximus™**

Manufacturer	Elation
Type	Profile
Lamp	950W LED
Power Consumption	1.400W
Weight	53kg
Special/Zoom	5,5°-55°



Fixture **OTOS H5**

Manufacturer	Cameo
Type	Hybrid
Lamp	480W
Power Consumption	700W
Weight	33kg
Special/Zoom	Multifunctional



Fixture **OTOS® SP6**

Manufacturer	Cameo
Type	Profile
Lamp	600W LED
Power Consumption	780W
Weight	33,5kg
Special/Zoom	4 Shutterblades

Fixture **OTOS® B5**

Manufacturer	Cameo
Type	Beam
Lamp	Signify MSD Silver 480W
Power Consumption	700W
Weight	33kg
Special/Zoom	1°





Fixture **iFORTE®**

Manufacturer	Robe
Type	Profile
Lamp	1000W
Power Consumption	1250W
Weight	42,5kg
Special/Zoom	5°-55°



Fixture **Rivale Profile**

Manufacturer	Ayrton
Type	Profile
Lamp	450W
Power Consumption	700W
Weight	30,8kg
Special/Zoom	4°-52°



Fixture **MAC Viper XIP**

Manufacturer	Martin
Type	Hybrid
Lamp	55x 20W LED
Power Consumption	1040W
Weight	37kg
Special/Zoom	5,7°-51°



Fixture **VL3600 Profile IP**

Manufacturer	Vari-Lite
Type	Profile
Lamp	1.000W LED
Power Consumption	1.475W
Weight	47,7kg
Special/Zoom	5,5° - 50°





iSeries

IP MEANS MORE AT ROBE

Explore the boundless possibilities of ROBE iSeries on:

robe-iseries.com

RAINS

REAP™

Wireless Control

Polar+

AirLOC

Lightweight



Fixture **Arolla Aqua**

Manufacturer	Clay Paky
Type	Profile
Lamp	900W
Power Consumption	1100W
Weight	38,7kg
Special/Zoom	5,5°-50°



Fixture **G-Profile Turbo**

Manufacturer	SGM
Type	Profile
Lamp	850W LED
Power Consumption	1.150W
Weight	52kg
Special/Zoom	8°-43°



35



Fixture **Proteus Smarty Hybrid**

Manufacturer	Elation
Type	Hybrid
Lamp	280W
Power Consumption	500W
Weight	35,5kg
Special/Zoom	Multifunctional



Fixture **iPointe®**

Manufacturer	Robe
Type	Hybrid
Lamp	310W
Power Consumption	550W
Weight	38kg
Special/Zoom	Multifunctional





Fixture **ORON H2**

Manufacturer	Cameo
Type	Hybrid
Lamp	260W
Power Consumption	460W
Weight	32kg
Special/Zoom	0,6°-32°



Fixture **Xtylos Aqua**

Manufacturer	Clay Paky
Type	Beam
Lamp	Laser Engine (Class 1/RG3)
Power Consumption	400W
Weight	30,4kg
Special/Zoom	1°-7°



FUTURE UNLOCKED

ORON[®] H2

IP65 HYBRID PHOSPHOR-LASER MOVING HEAD

www.cameolight.com/oron

for lumen beings



EVENT TRUCKING



BECAUSE YOUR SUCCESS IS OUR MISSION.

- ✓ Customised transport solutions
- ✓ Across Europe
- ✓ 100% tailored to your needs

Phone: +49 231 999 61-85
eMail: prime@niclen.de

CHECK OUT OUR WEBSITE





Fixture	Rogue Outcast 1L Beam
Manufacturer	Chauvet
Type	Beam
Lamp	140W LED
Power Consumption	233W
Weight	16,1kg
Special/Zoom	1,4°



Fixture	Maverick Storm 2 BeamWash
Manufacturer	Chauvet
Type	WashBeam
Lamp	19x 50W / 144x 0,2W LED
Power Consumption	1.080W
Weight	23,8kg
Special/Zoom	3,6° - 53,4°

39



Fixture	iSpiider IP®
Manufacturer	Robe
Type	Wash
Lamp	1x 60W + 18x 40W LED
Power Consumption	660W
Weight	24,9kg
Special/Zoom	4°-50°



Fixture	MAC Aura XIP
Manufacturer	Martin
Type	Wash
Lamp	7x 60W / 12x 4W
Power Consumption	340W
Weight	8,95kg
Special/Zoom	6,3°-50,4°



JDCI

IP



84 hocheffiziente White Strobe LEDs
1.728 RGB LEDs für beeindruckende Farben

Individuelle Ansteuerung der White Strobe Segmente
Single Pixel Control der RGB Plates

GLP DigiFX Engine: extrem breite Palette mit
über 80 voreingestellten Effekten



[f/GLP.German.Light.Products](#)
[@/GermanLightProducts](#) [www.glp.de](#)



Fixture	JDC2
Manufacturer	GLP
Type	Tilt Movinglight
Lamp	Beam: 84x10 W White Strobe LEDs Plate: 1,728x RGB LEDs
Power Consumption	1500W
Weight	23,5kg
Special/Zoom	Motorized Tilt (180°) 2 Separate Lightsources



Fixture	Color STRIKE M
Manufacturer	Chauvet
Type	Strobe Blinder
Lamp	896x Tri-Color SMD LEDs 432x CW LEDs
Power Consumption	740W
Weight	12,1kg
Special/Zoom	Motorized Tilt 180°

41



Fixture	COLORado PXL Bar 16
Manufacturer	Chauvet
Type	LED Pixelbar
Lamp	16x 45W RGBW LEDs
Power Consumption	790W
Weight	20,7kg
Special/Zoom	5,8° - 47,9°



Fixture	COLORado PXL Curve 12
Manufacturer	Chauvet
Type	Bar
Lamp	12x45W
Power Consumption	768W
Weight	34,5kg
Special/Zoom	5,7°-36,3°



Fixture	P-10 RGBW
Manufacturer	SGM
Type	Wash / Strobe / Flood
Lamp	48x 24W LED
Power Consumption	1.400W
Weight	20,9kg
Special/Zoom	10° + Diversity of Filter Options



Fixture	Q-7 RGBW
Manufacturer	SGM
Type	Flood
Lamp	2.000 RGBW SMD LEDs
Power Consumption	465W
Weight	8,1kg
Special/Zoom	Flicker Free, 110°



Fixture	Q-10 RGBW
Manufacturer	SGM
Type	Wash / Strobe / Flood
Lamp	2.048 RGB SMD x 2.048 White SMD LEDs
Power Consumption	1.250W
Weight	19,8kg
Special/Zoom	High Power LED Fixture, 110°



Fixture	Q-7 W
Manufacturer	SGM
Type	Wash / Strobe / Flood
Lamp	1.000 Cool White LEDs (5.700K)
Power Consumption	485W
Weight	8,1kg
Special/Zoom	Flicker Free, 110°



Fixture	P-5 RGBW
Manufacturer	SGM
Type	Wash
Lamp	44x 10W LED
Power Consumption	630W
Weight	14,5kg
Special/Zoom	IP66 High Power LED Fixture / 43h°



Fixture	ZENIT® W600
Manufacturer	Cameo
Type	Wash
Lamp	40x 15W RGBW LED
Power Consumption	565W
Weight	13kg
Special/Zoom	45°, 100°



Fixture	P-5 W
Manufacturer	SGM
Type	Wash
Lamp	44x High-Power 10W Cool White LED
Power Consumption	470W
Weight	8,9kg
Special/Zoom	Flicker Free, 43°



Fixture	ZENIT® W600 SMD
Manufacturer	Cameo
Type	Wash
Lamp	504x SMD 4-in-1 LED
Power Consumption	580-1.100W
Weight	13kg
Special/Zoom	118°





Fixture	P-6 RGBW
Manufacturer	SGM
Type	Wash / Strobe / Flood
Lamp	24x High-Power 24W RGBW LED
Power Consumption	630W
Weight	14,5kg
Special/Zoom	IP66, High Lux Performance, 10°



Extra	Barndoors
Manufacturer	SGM
Description	P5, P6, P10 Q2, Q7, Q10



Extra	Filters
Manufacturer	SGM
Description	P6, P10



Fixture	PJ-5
Manufacturer	DVT Light
Type	Wash / Strobe
Lamp	30x25W
Power Consumption	600W
Weight	16,6kg
Special/Zoom	10°-45°



Extra	Barndoors
Manufacturer	Cameo
Description	W600



Extra	Filters
Manufacturer	Cameo
Description	W600 Filterframe 60° x 10°



Fixture	Q-2 RGBW
Manufacturer	SGM
Type	Flood
Lamp	864x RGBW SMD LED (5.700K)
Power Consumption	265W
Weight	6kg
Special/Zoom	110°, 2.000-10.000K Colour Temperature Control



Fixture	ZENIT® W300
Manufacturer	Cameo
Type	Wash / Strobe / Flood
Lamp	21x 15W RGBW LED
Power Consumption	300W
Weight	8kg
Special/Zoom	SnapMag Filterframe 45° + 100°

45



Fixture	Q-2 W
Manufacturer	SGM
Type	Flood
Lamp	432x Cool White LED (5.700K)
Power Consumption	265W
Weight	6kg
Special/Zoom	Flicker Free, 110°



Fixture	ZENIT® B200
Manufacturer	Cameo
Type	Wash
Lamp	21x 15W RGBW LED
Power Consumption	180W
Weight	8kg
Special/Zoom	SnapMag Filterframe 45° + 100°

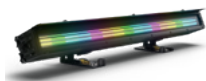


Fixture	SP-6
Manufacturer	SGM
Type	Stick
Lamp	6x 40W RGBA
Power Consumption	250W
Weight	11kg
Special/Zoom	13°



Fixture	SIXBAR 1000 IP
Manufacturer	Elation
Type	Stick
Lamp	12x 12W 6-in-1 RGBAW + UV LED
Power Consumption	145W
Weight	8,6kg
Special/Zoom	25°





Fixture	PIXBAR® SMD IP G2
Manufacturer	Cameo
Type	Bar
Lamp	320xSMD-RGB-LED SMD-W 3W LED
Power Consumption	180W
Weight	12,5kg
Special/Zoom	72° / 94° Fully On; 84° / 96° RGB; 70° / 76° White (Centre Line)



Fixture	PIXBAR 400 IP G2
Manufacturer	Cameo
Type	Bar
Lamp	16x 8W
Power Consumption	180W
Weight	11,8kg
Special/Zoom	25° Beam - 42° Field LED Bar incl. Stack Kit, Verti-Mount, Filter 55°, Frost Filter

47



Fixture	Fusion2
Manufacturer	GLP
Type	Stick
Lamp	20x 15W RGBW LED
Power Consumption	330W
Weight	12,5kg
Special/Zoom	6°



Fixture	IntelliPix-R
Manufacturer	Ayrton
Type	Grid
Lamp	25x 15W RGBW LED
Power Consumption	460W
Weight	15,9kg



Fixture	VDO Atomic™ Dot WRM
Manufacturer	Martin
Type	Strobe / Blinder
Lamp	LED Dot
Power Consumption	55W
Weight	2,2kg
Special/Zoom	Outdoor, P3 Video Processing / 2.700K



Fixture	VDO Atomic™ Dot CLD
Manufacturer	Martin
Type	Strobe / Blinder
Lamp	LED Dot
Power Consumption	55W
Weight	2,2kg
Special/Zoom	Outdoor, P3 Video Processing / 5.700K



Fixture	VDO Atomic™ Bold
Manufacturer	Martin
Type	Hybrid
Lamp	400W LED
Power Consumption	400W
Weight	9,32kg
Special/Zoom	2.700-11.000K, PDE Hybrid Connectors



Fixture	KNV Dot
Manufacturer	GLP
Type	Spot
Lamp	1x 30W LED
Power Consumption	34W
Weight	0,7kg
Special/Zoom	Strobe, Blinder



Fixture	KNV Line
Manufacturer	GLP
Type	Bar
Lamp	5x 30W LED
Power Consumption	170W
Weight	1,8kg
Special/Zoom	Strobe, Blinder



Fixture	KNV PSU
Manufacturer	GLP
Description	25x Dot or 5x Line



Fixture	FP1 Titan Tube
Manufacturer	Astera
Type	Creative Light
Lamp	72W LED RGBW
Power Consumption	78W
Weight	1,4kg
Special/Zoom	Use with Astera ART 7



Fixture	FP2 Helios Tube
Manufacturer	Astera
Type	Creative Light
Lamp	RGBMA LED
Power Consumption	65W
Weight	0,77kg
Special/Zoom	Use with Astera ART 7



Fixture	FP3 Hyperion Tube
Manufacturer	Astera
Type	Creative Light
Lamp	RGBMA LED
Power Consumption	144W / 92W
Weight	2,9kg
Special/Zoom	Single-Pixel Control, 20h Battery Runtime



Fixture	NYX Bulb
Manufacturer	Astera
Type	Creative Light
Lamp	14 / 10W RGBMA LED
Power Consumption	14W / 10W
Weight	0,24kg





Fixture **AX2-100**

Manufacturer	Astera
Type	Bar
Lamp	16x10W
Power Consumption	80W
Weight	7,4kg
Special/Zoom	21°



Fixture **AX2-50**

Manufacturer	Astera
Type	Bar
Lamp	8x10W
Power Consumption	40W
Weight	4,5kg
Special/Zoom	21°



Fixture **AX9**

Manufacturer	Astera
Type	PAR
Lamp	105W RGBMA LED
Power Consumption	70W
Weight	5,4kg
Special/Zoom	Use with Astera ART 7



Fixture **AX5**

Manufacturer	Astera
Type	PAR
Lamp	3x 15W RGBAW LED
Power Consumption	55W
Weight	3,4kg
Special/Zoom	Use with Astera ART 7





Fixture

ART 7

Manufacturer

Astera

Type

W-DMX Box



Fixture

Wireless DMX Transmitter

Manufacturer

ExpoLite



Fixture

iDMX Core

Manufacturer

Cameo





Fixture	ZENIT® P130
Manufacturer	Cameo
Type	PAR
Lamp	4x 32W RGBW Osram OSTAR LED
Power Consumption	155W
Weight	4,8kg
Special/Zoom	8°, 20°



Fixture	ZENIT® B60-B & -C
Manufacturer	Cameo
Type	PAR
Lamp	4x 15W RGBW Cree LED
Power Consumption	100W
Weight	5,4kg
Special/Zoom	11°, 25°, 40°, 60° x 10°

53



Fixture	FLAT PRO® 7 G2
Manufacturer	Cameo
Type	PAR
Lamp	7x 10W RGBWA LED
Power Consumption	60W
Weight	4kg
Special/Zoom	30°



Fixture	FLAT PRO® 12 G2
Manufacturer	Cameo
Type	PAR
Lamp	12x 10W RGBWA LED
Power Consumption	110W
Weight	6kg
Special/Zoom	30°


Fixture **ZENIT® Z180 G2**

Manufacturer	Cameo
Type	PAR
Lamp	180W RGBW COB LED
Power Consumption	220W
Weight	8,2kg
Special/Zoom	10°-40° incl. Barndoors


Fixture **DROP® B1**

Manufacturer	Cameo
Type	Uplight
Lamp	1x 15W RGBWA + UV LED
Power Consumption	35W
Weight	1kg
Special/Zoom	9° / 11° / 27°





Fixture	E.SHOW FC
Manufacturer	ROXX®
Type	Headlight
Lamp	1x 230W RGBL LED
Power Consumption	230W
Weight	5,7kg
Special/Zoom	19° with included narrow lens / 2.000-10.000K (more lenses available)



Fixture	E.SHOW D
Manufacturer	ROXX®
Type	Headlight
Lamp	1x 200W Daylight LED
Power Consumption	220W
Weight	5,7kg
Special/Zoom	24° with included narrow lens / 5.600K (more lenses available)



Fixture	E.SHOW TW+
Manufacturer	ROXX®
Type	Headlight
Lamp	1x 200W RGBLAC LED
Power Consumption	220W
Weight	5,7kg
Special/Zoom	19°19° with included narrow lens / 2.000-10.000K (more lenses available)



Fixture	B.FLEX & B.FLEX HAT W
Manufacturer	ROXX®
Type	Spot
Lamp	40W RGBL Single-Source-LED
Power Consumption	62W
Weight	2,5kg
Special/Zoom	Bi-Colour + Pixel Effects, Direct Controlling via ROXX.APP





Fixture

CLUSTER B2 W

Manufacturer	ROXX®
Type	Blinder
Lamp	2x 260W Warm White + Amber + Red
Power Consumption	650W
Weight	8,5kg (incl. Yoke)
Special/Zoom	Tool-Free Connection of CLUSTER Products for Scalable Designs, Redshift for Classic Tungsten Look



Fixture

CLUSTER B2 FC

Manufacturer	ROXX®
Type	Blinder
Lamp	2x 260W RGBA + Warm White
Power Consumption	650W
Weight	8,5kg (incl. Yoke)
Special/Zoom	Tool-Free Connection of CLUSTER Products for Scalable designs, Redshift for Classic Tungsten Look + Full Colour Spectrum



Fixture

CLUSTER B4 W

Manufacturer	ROXX®
Type	Blinder
Lamp	4x 260W Warm White + Amber + Red
Power Consumption	1.400W
Weight	13,8kg (incl. Yoke)
Special/Zoom	Tool-Free Connection of CLUSTER Products for Scalable Designs, Redshift for Classic Tungsten Look



Fixture

CLUSTER B4 FC

Manufacturer	ROXX®
Type	Blinder
Lamp	4x 260W RGBA + Warm White
Power Consumption	1.400W
Weight	13,8kg (incl. Yoke)
Special/Zoom	Tool-Free Connection of CLUSTER Products for Scalable Designs, Redshift for Classic Tungsten Look + Full Colour Spectrum



Fixture	STRIKE Array 2
Manufacturer	CHAUVET Professional
Type	Blinder
Lamp	96x LED (WW) 1,33W 10x LED (Amber) 2,63W
Power Consumption	129W
Weight	8kg
Special/Zoom	Beam Angle: 60,3° Field Angle: 99°



Fixture	STRIKE Array 4
Manufacturer	CHAUVET Professional
Type	Blinder
Lamp	192 LED (WW) 1,33 W 20 LED (Amber) 2,63 W
Power Consumption	245W
Weight	13kg
Special/Zoom	Beam Angle: 61.5° Field Angle: 100.5°



Fixture	ArenaCob 4FC
Manufacturer	Prolights
Type	Blinder
Lamp	4 x 75W RGBW LED
Power Consumption	230W
Weight	8kg
Special/Zoom	"building block" Rigging System





Fixture

FUSION MBL 20

Manufacturer	GLP
Type	Flood
Lamp	270W Tunable White LED
Power Consumption	200W
Weight	5kg
Special/Zoom	100° / 2.700-6.500K



Fixture

FUSION MBL 40

Manufacturer	GLP
Type	Flood
Lamp	550W Tunable White LED
Power Consumption	400W
Weight	10kg
Special/Zoom	100° / 2.700-6.500K





Fixture **F1 T**

Manufacturer	Cameo
Type	Tungsten
Lamp	78W
Power Consumption	87W
Weight	4,5kg
Special/Zoom	24°-78°



Fixture **F2 T**

Manufacturer	Cameo
Type	Tungsten Spot
Lamp	240W LED
Power Consumption	210W
Weight	9kg
Special/Zoom	3.200K, Fresnel, 15°-40° Zoom



Fixture **F1 D**

Manufacturer	Cameo
Type	Daylight
Lamp	78W
Power Consumption	87W
Weight	4,5kg
Special/Zoom	24°-78°



Fixture **F2 D**

Manufacturer	Cameo
Type	Daylight Spot
Lamp	240W LED
Power Consumption	210W
Weight	9kg
Special/Zoom	5.400K, Fresnel, 15°-40° Zoom





Fixture	F2 FC
Manufacturer	Cameo
Type	Fresnel Spot
Lamp	240W
Power Consumption	250W
Weight	9kg
Special/Zoom	18°-55°



Fixture	F4 T
Manufacturer	Cameo
Type	Tungsten Spot
Lamp	520W LED
Power Consumption	473W
Weight	17,8kg
Special/Zoom	3.200K, Fresnel, 12°-40° Zoom

60



Fixture	F4 FC
Manufacturer	Cameo
Type	Fresnel Spot
Lamp	LED 570W RGBW
Power Consumption	355W
Weight	17,8kg
Special/Zoom	1.600-6.500K, Fresnel, 12°-40°



Fixture	F4 D
Manufacturer	Cameo
Type	Daylight Spot
Lamp	520W LED
Power Consumption	478W
Weight	17,8kg
Special/Zoom	5.600K, Fresnel, 12°-40° Zoom





Fixture	L7 TT
Manufacturer	Arri
Type	Fresnel
Lamp	LED
Power Consumption	220W
Weight	9,8kg
Special/Zoom	2.600-3.600K / 15°-50°



Fixture	KL PANEL
Manufacturer	Elation
Type	Surface Light
Lamp	295W RGBWLC LED
Power Consumption	299W
Weight	13kg
Special/Zoom	100° / 2.000-10.000K / CRI: 95



Fixture	L7 C
Manufacturer	Arri
Type	Fresnel
Lamp	LED
Power Consumption	220W
Weight	9,8kg
Special/Zoom	15°-50°



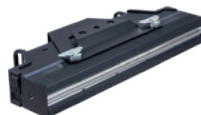
Fixture	S4 IP
Manufacturer	Cameo
Type	LED Softlight Panel
Lamp	4x 544 RGBWW SMD-LEDs
Power Consumption	460W
Weight	16,4kg
Special/Zoom	1.800K - 10.000K / CRI: 95





Fixture **Atomic 3000**

Manufacturer	Martin
Type	Strobe
Lamp	Xenon
Power Consumption	3.000W
Weight	7,5kg
Special/Zoom	25x lightning



Fixture **JDC Line 500**

Manufacturer	GLP
Type	Hybrid Strobe
Lamp	100x White LED + 200x RGB LED
Power Consumption	800W
Weight	6kg
Special/Zoom	PixelmapPing



Fixture **Atomic 3000 LED**

Manufacturer	Martin
Type	Strobe
Lamp	228x CreeXLamp XP-l 10W White LED
Power Consumption	750W
Weight	8kg
Special/Zoom	Aura Backlight 64x RGBW



Fixture **Stormy**

Manufacturer	Clay Paky
Type	Strobe
Lamp	144x 7W LED
Power Consumption	850W
Weight	7,2kg





Fixture	S-TRIBE™
Manufacturer	Portman
Type	Creative Light
Lamp	5x 40W Halo LED, 10x 8W Glow
Power Consumption	280W
Weight	8kg
Special/Zoom	94° Halo LED 1600-3200K, RGB + White 6000K



Fixture	P1 Retro Lamp
Manufacturer	Portman
Type	Creative Light
Lamp	7x OSRAM Haloline R7s PRO 230V 230W
Power Consumption	1.610W
Weight	12,5kg
Special/Zoom	1.600K-2.900K / CRI: 100



Fixture	Mantis
Manufacturer	Portman
Type	Creative Light
Lamp	3x 60W + 3x 12W + 1x 18W LED
Power Consumption	250W
Weight	8kg
Special/Zoom	1.600-3.200K RGBW



Fixture	P2 Hexaline
Manufacturer	Portman
Type	Creative Light
Lamp	6x OSRAM Haloline R7s PRO 230V 230W
Power Consumption	1.380W
Weight	12,5kg
Special/Zoom	1.600K-2900K / CRI: 100



Fixture	P1 Mini LED
Manufacturer	Portman
Type	Creative Light
Lamp	7x 3W + 7x 10W RGBW LED
Power Consumption	95W
Weight	8kg
Special/Zoom	1.800K RGBW / CRI: >90



Fixture	P3 PIX3L
Manufacturer	Portman
Type	Creative Light
Lamp	3x OSRAM Haloline R7s PRO 230V 230W
Power Consumption	690W
Weight	4,5kg
Special/Zoom	1.600-2.900K / CRI: 100



Fixture	picklePATT™
Manufacturer	Robe
Type	Creative Light
Lamp	575W
Power Consumption	575W
Weight	5,3kg
Special/Zoom	Retro Design



Fixture	PATT 2013™
Manufacturer	Robe
Type	Creative Light
Lamp	750W HPL
Power Consumption	670W
Weight	7,2kg
Special/Zoom	Retro Design





Fixture	SIXBAR 1000
Manufacturer	Elation
Type	Bar
Lamp	12x 12W RGBAW + UV LED
Power Consumption	145W
Weight	7,3kg
Special/Zoom	30°



Fixture	CUEPIX Panel
Manufacturer	Elation
Type	Matrix
Lamp	High Power Long Life 3 in 1 RGB COB Panel
Power Consumption	750W
Weight	16,5kg
Special/Zoom	60° Beam / 80° Field Angles



Fixture	Creative Light 1+
Manufacturer	GLP
Type	Creative Light
Lamp	24x 300mW RGB LED
Power Consumption	15W
Weight	0,6kg
Special/Zoom	PixelmapPing



Fixture	ST5
Manufacturer	Arri
Type	Fresnel Tungsten
Lamp	5.000W
Weight	15kg
Special/Zoom	9° - 62°



Fixture	ST1
Manufacturer	Arri
Type	Fresnel Tungsten
Lamp	1.000W
Weight	7kg
Special/Zoom	10° - 58°

66



Fixture	ST2
Manufacturer	Arri
Type	Fresnel Tungsten
Lamp	2.000W
Weight	12,5kg
Special/Zoom	8° - 56°



Fixture	650 Plus
Manufacturer	Arri
Type	Fresnel Tungsten
Lamp	650W
Weight	2,6kg
Special/Zoom	12° - 52°





Fixture **710SX2**

Manufacturer Robert Juliat

Type Profiler

Lamp 2.000W

Power Consumption 2.000W

Weight 23,5kg

Special/Zoom 10°-25°



Fixture **714SX2**

Manufacturer Robert Juliat

Type Profiler

Lamp 2.000W

Power Consumption 2.000W

Weight 20kg

Special/Zoom 15°-40°



Fixture **713SX2**

Manufacturer Robert Juliat

Type Profiler

Lamp 2.000W

Power Consumption 2.000W

Weight 18,5kg

Special/Zoom 29°-50°



Fixture **D'Artagnan 930
SNX**

Manufacturer Robert Juliat

Type Profiler

Lamp 2.500W

Power Consumption 3.100W

Weight 34kg

Special/Zoom 10°-25°





D'Artagnan 933 SNX

Fixture	
Manufacturer	Robert Juliat
Type	Profiler
Lamp	2.500W
Power Consumption	3.100W
Weight	34kg
Special/Zoom	29°-50°



LEDko Fullspectrum 6 HD

Fixture	
Manufacturer	Coemar
Type	Profiler
Lamp	RGBWLA LED
Power Consumption	220W
Weight	5,7kg
Special/Zoom	15°-35°



D'Artagnan 934 SNX

Fixture	
Manufacturer	Robert Juliat
Type	Profiler
Lamp	2.500W
Power Consumption	3.100W
Weight	34kg
Special/Zoom	16°-38°



LEDko Fullspectrum 6 HD

Fixture	
Manufacturer	Coemar
Type	Profiler
Lamp	RGBWLA LED
Power Consumption	220W
Weight	5,7kg
Special/Zoom	25°-50°



LEDKO™ FullSpectrum 6 HD

- Absolut homogene Licht- und Farbverteilung in der Projektion - keine „Multi-Schatten“
- 6-Farb LED-Engine: Rot, Grün, Blau, Weiß, Lime, Amber
- Weißlichtmodus mit kontinuierlicher variabler Farbtemperatur von 2.700K – 6.500K
- Farbwiedergabeindex >90



VISION2

 **coemar**

Premium Distribution
www.visiontwo.de



Fixture	S4 Profile 19°
Manufacturer	ETC
Type	Profiler
Lamp	750W
Power Consumption	750W
Weight	6,3kg
Special/Zoom	Shutter in 3 Levels



Fixture	S4 Profile 36°
Manufacturer	ETC
Type	Profiler
Lamp	750W
Power Consumption	750W
Weight	6,3kg
Special/Zoom	Shutter in 3 Levels

70



Fixture	S4 Profile Zoom
Manufacturer	ETC
Type	Profiler
Lamp	750W
Power Consumption	750W
Weight	9,5kg
Special/Zoom	15°-30°



Fixture	S4 Profile Zoom
Manufacturer	ETC
Type	Profiler
Lamp	750W
Power Consumption	750W
Weight	8,6kg
Special/Zoom	25°-50°





Image Similar



Fixture **ARRI SUN 5 EVENT**

Manufacturer	Arri
Type	PAR
Lens Diameter	175mm
Socket	G 22
Lamp	575W
Hanging	28mm Spigot
Barndoor	197mm
Filter Frame	212mm
Weight	6,3kg
Protection Class	IP23
Certification	CE
Colour	Black

HMI Arri Cable Systems

Event Cable 5m

Event Cable 10m

Event Cable 20m

VEAM 5/12 Cable 7m

VEAM 25/40 Cable 7m

VEAM 60/120 Cable 15m



Event Splitbox
Set 2 pieces



Event Splitbox
Set 8 pieces



Location Splitbox active



Fixture **ARRI True Blue D5**

Manufacturer	Arri
Type	Fresnel
Lens Diameter	150 mm
Socket	G22
Lamp	575W SE
Hanging	28mm Spigot
Barndoor	197mm
Filter Frame	197mm
Weight	7,5kg
Protection Class	IP23
Certification	CE
Colour	Black

72

Image Similar



Arri PSU



Arri EB Multifunction
200W/575W/1.200W



Schieder EB
6x 575W



Schieder EB
3x 1.200W

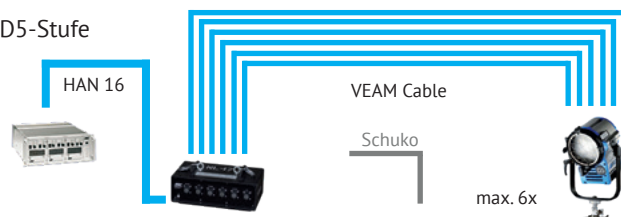


ARRI EB
2,5/4kW



ARRI EB
6/12kW

D5-Stufe



SUN 5 EVENT





Device	Raindome 95
Manufacturer	Selby
Power Connection	CEE 16A Blue > Schuko
Power Consumption	65W



Device	Raindome 80
Manufacturer	Selby
Power Connection	CEE 16A Blue > Schuko
Power Consumption	65W



Device	Raindome 60
Manufacturer	Selby
Power Connection	CEE 16A Blue > Schuko
Power Consumption	65W



Device	RainRoof XL
Manufacturer	Selby
Power Connection	CEE 16A Blue > Schuko
Power Consumption	65W



Device	RainRoof L
Manufacturer	Selby
Power Connection	CEE 16A Blue > Schuko
Power Consumption	65W



Device	RainRoof M
Manufacturer	Selby
Power Connection	CEE 16A Blue > Schuko
Power Consumption	65W



Fixture **Lancelot**

Manufacturer	Robert Juliat
Type	Followspot
Lamp	4.000W HTI
Power Consumption	4.000W
Power Connection	CEE 32A Red
Weight	125kg
Special/Zoom	2°-5°



Fixture **Merlin**

Manufacturer	Robert Juliat
Type	Followspot
Lamp	2.500W HMI
Power Consumption	3.000W
Power Connection	powerCON TRUE1
Weight	76kg
Special / Zoom	3°-12°



Fixture **Aramis**

Manufacturer	Robert Juliat
Type	Followspot
Lamp	2.500W HMI
Power Consumption	3.000W
Power Connection	Schuko
Weight	59kg + PSU
Special / Zoom	4,5°-8°



Fixture **Cyrano**

Manufacturer	Robert Juliat
Type	Followspot
Lamp	2.500W HMI
Power Consumption	3.000W
Power Connection	Schuko
Weight	59kg + PSU
Special / Zoom	3°-8°



Fixture	Heloise
Manufacturer	Robert Juliat
Type	Followspot
Lamp	2.500W HMI
Power Consumption	2.600W
Power Connection	CEE 32A Red
Weight	32kg + PSU
Special	15°-29°



Fixture	Alex
Manufacturer	Robert Juliat
Type	Followspot
Lamp	2.500W Halogen
Power Consumption	2.500W
Power Connection	Schuko
Weight	30kg
Zoom	7°-14,5°



Fixture	Victor
Manufacturer	Robert Juliat
Type	Followspot
Lamp	1.800W MSR
Power Consumption	1.800W
Power Connection	Schuko
Weight	33kg
Zoom	7°-14,5°



Robo Spot System

- RoboSpot Base Station
- RoboSpot MotionCamera
- Works with a Wide Range of Robe Fixtures

BMFL™ FollowSpot LT

A compact, affordable solution for the large arena. Further adding to the ground breaking RobeSpot system, the FollowSpot LT is designed for the larger venue that requires a longer throw distance, tighter beam and greater output power. The LT is the same size and weight as the standard BMFL™ FollowSpot, which is substantially smaller than other products of similar power. The proprietary optical design provides a 4:1 zoom ratio (2'-8') and an output exceeding 455,000 lux a 5 meters. Like the Standard BMFL™ FollowSpot, the LT can be operated as a manual, stand-alone follow spot using the Robe LightMaster-Side and LightMasterRear control kits. Similarly, the LT can be operated remotely using the Robe RobeSpot MDC remote follow spot system and is pre-wired for the Digital camera. Packed with all the features you would expect from a BMFL™ series product, including, imperceptible colour mixing, fixed colour filters, 6000K native colour temperature, CRI >92, Variable CTO to 2700K & CTB to 9000K, fixed & variable frost filters, focus, zoom and a fast iris.

Main Features:

- 1.700W Osram lock it! HTI 1700 / PS
- 40.510lm 455.000 lux at 5m
- Zoom Range: 2°-8°

Effects:

- CMY
- 2 Colour Wheels
- Frost
- Iris



Fixture

Rearkit

Manufacturer

Robe

Fixture

iFORTE® LTX FS

Manufacturer

Robe

Type

Profile

Lamp

1.000W LED

Power Consumption

1.250W

Weight

49kg

Special/Zoom

0,7° - 52°

Fixture

FORTE® FS

Manufacturer

Robe

Type

Profile

Lamp

1.000W LED

Power Consumption

1.250W

Weight

42,2kg

Special/Zoom

5° - 55° / CRI: 96



Device	ATMe Touring
Manufacturer	MDG
Type	Hazer
CO ² Consumption	0,36kg/h at 2,76 bar
Power Consumption	850W
Power Connection	Schuko
Weight	108kg



Device	theONE Rackversion
Manufacturer	MDG
Type	Hazer
CO ² Consumption	0,35kg at 2.07bar
Power Consumption	1.100-1.480W
Power Connection	Schuko
Weight	23kg



Device	Tour Hazer II
Manufacturer	Smoke Factory
Type	Hazer
Fluid Consumption	8,9 ml/min. (max.output) 1,0 ml/min. (40%)
Power Consumption	1.500W
Power Connection	Powercon True1
Weight	16,5kg



Device	Fog Blaster
Manufacturer	Smoke Factory
Type	CO ² shooter effect simulator, without CO ²
Fluid Consumption	at maximum pressure approx. 10 ml/s
Power Consumption	3.200W
Power Connection	Powercon True1/
Weight	24,5kg
Special	adjustable in 100 ms steps up to 2 s, or individually



Device	Fan Fogger EC 2.6
Manufacturer	Smoke Factory
Type	Fan Fogger
Fluid Consumption	240 ml/min. (max. output), 60 ml/min. (continuous)
Power Consumption	Fogger 2.600W, Fan 450W
Power Connection	Powercon True1
Weight	75kg
Special	~ 30 sec. to 100 %, Permanent fog at



Device	IP Falcon
Manufacturer	Smoke Factory
Type	Fogger
Fluid Consumption	253 ml/min. (185 ml/min. 110 V) (max. output), 54,5 ml/min. (30 ml/min. 110 V) (Dauernebel)
Power Consumption	3.100W
Power Connection	Powercon True1/ Schuko
Weight	27kg
Special	approx. 55 sec. on 100 % Extended Mode (50 sec 110 V); approx. 22 sec. on 100 % with Impulse Mode



Device	Data II
Manufacturer	Smoke Factory
Type	Fogger
Fluid Consumption	253 ml/min. (185 ml/min. 110 V) (max. output), 54,5 ml/min. (30 ml/min. 110 V) (Continuous fog)
Power Consumption	2.600W
Power Connection	Schuko
Weight	12,8kg
Special	~ 30 sec. to 100 %, permanent fog at



Device	FAN AX
Manufacturer	Smoke Factory
Type	Variable Fan
Volume Flow	9000m ³ /h
Power Consumption	850W
Weight	29,5kg



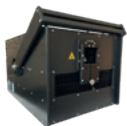
Device	AF1
Manufacturer	JEM
Type	Variable Fan
Volume Flow	1.815m ³ /h
Power Consumption	120W
Power Connection	Schuko
Weight	8,5kg



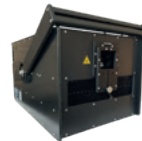
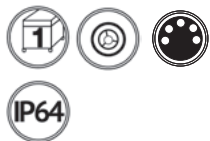
Device	FAN AX MINI
Manufacturer	Smoke Factory
Type	Variable Fan
Volume Flow	1605m ³ /h
Power Consumption	150W
Weight	12,7kg



Device	AF2
Manufacturer	JEM
Type	Variable Fan
Volume Flow	5.700m ³ /h
Power Consumption	245W
Power Connection	Schuko
Weight	15,7kg



Fixture	EXCELLENT-D15
Manufacturer	Lightline
Type	Laser Projector
Lamp	15W RGB Laser Diode
Power Consumption	600W / 3A
Weight	16kg
Special/Zoom	Beam Diameter: 3,5mm



Fixture	EXCELLENT-D40
Manufacturer	Lightline
Type	Laser Projector
Lamp	40W RGB Laser Diode
Power Consumption	1300W / 7A
Weight	25kg
Special/Zoom	Beam Diameter: 5,9mm





Device	GrandMA 3 Fullsize
Manufacturer	MA Lighting
Type	Console
DMX Out	6x DMX 5 Pin
Weight	44kg



Device	GrandMA 2 Fullsize
Manufacturer	MA Lighting
Type	Console
DMX Out	6x DMX 5 Pin
Weight	54kg



Device	Desk Dough® Beam - single unit
Manufacturer	Stops & Mops
Type	mini-computer
DMX Channels	71 (Beam Layer), 33 (Beam Cam)
Video Output	HDMI 3840x2160 @60Hz
Weight	1kg



Device	Grand MA 2 Faderwing
Manufacturer	MA Lighting
Type	Console
Fader	15x Motorized Fader
Link	via MA-Bus Link
Weight	8kg





Device **GrandMA 3 light**

Manufacturer	MA Lighting
Type	Console
DMX Out	6x DMX 5 Pin
Weight	33kg



Device **GrandMA 2 light**

Manufacturer	MA Lighting
Type	Console
DMX Out	6x DMX 5 Pin
Weight	44kg



Device **GrandMA 2 ultra-light**

Manufacturer	MA Lighting
Type	Console
DMX Out	6x DMX 5 Pin
Weight	35kg



Device **GrandMA 3 8Port Node**

Manufacturer	MA Lighting
Type	Signal Processor
DMX Out	DMX 5 Pin
Weight	2kg





Device	GrandMA 3 Unit M
Manufacturer	MA Lighting
Type	Network Processor
DMX Out	DMX 5 Pin
Weight	5kg



Device	GrandMA 3 Unit L
Manufacturer	MA Lighting
Type	Network Processor
DMX Out	DMX 5 Pin
Weight	5kg



Device	GrandMA 2 NPU
Manufacturer	MA Lighting
Type	Network Processor
DMX Out	8x DMX 5 Pin Universes
Weight	9kg



Device	GrandMA VPU plus MK2
Manufacturer	MA Lighting
Type	Video Processing Unit
Input	2x SDI (BNC)
Output	3x DVI, 2x XLR 3 Pin, 2x Ethercon, 2x USB, 1x eSATA
Weight	15kg





Device	CRMX Aurora
Manufacturer	LumenRadio
Type	WDMX / CRMX
Input	DMX5
Output	DMX5



Device	XPD-28-5R RDM-DMX Splitter
Manufacturer	Swisson
Type	DMX-Splitter/ - Booster
Input / Output	2x DMX Input 8x Output



Device	LumiNode 12
Manufacturer	Luminex
Type	Processing Device
Input / Output	2x 1GB Ethercon / 12x DMX5



Device	LumiNode 4
Manufacturer	Luminex
Type	Processing Device
Input / Output	2x 1GB Ethercon / 4x DMX5



Device	GigaCore 30i Rack
Manufacturer	Luminex
Type	GigaCore Switch
Input / Output	2x 24x RJ45 / 6x SFP+ Cages



Device	GigaCore 30i
Manufacturer	Luminex
Type	GigaCore Switch
Input / Output	24x RJ45 / 6x SFP+ Cages



Device	Touch Monitor 23,8"
Manufacturer	DELL
Type	Touch Monitor
Inputs	DP, HDMI, VGA
Resolution	1.920x1.080px (Full-HD)
Weight	3,1kg



Device	Monitor 24,5"
Manufacturer	BenQ
Type	Monitor
Inputs	DVI, HDMI, VGA
Resolution	1.920x1.080px (Full-HD)
Weight	4,4kg



Dimmers

MA 12 CH x 2,3kW 32A (Han16E)

MA 24 CH x 2,3kW 63A (Han16A and Han16E)

MA 24 CH x 3,7kW 125A
(Han16A and Han16E)

MA 48 CH x 2,3kW 125A
(Han16A and Han16E)

MA 6 CH x 5,7kW 63A (HAN6E)

Art 2000 Powerrack

Art 2000 Switch 12x 16A

Art 2000 Dimmer 12x 16A

Powerlock Cabel 400V 150q 5m

Powerlock Cabel 400V 150q 15m

Powerlock Adapter 125A CEE 2,5q

Powerlock Adapter 150q Ring Connector



Device **Art 2000 System**

Manufacturer	Avolites
Type	Dimmer / Switch
DMX	5 Pin
DMX Channels	48
Power Connection	Powerlock
Power Consumption	max. 48x 16A
Dimensions	100x116x60cm
Weight	130kg
Special	Modular System



Speaker

E6

Manufacturer	d & b audiotechnik
Type	Point Source
Description	2-Way Passive Enclosure
Components	1x 6,5" / 1x 1"
Usable Bandwidth	85Hz-20kHz
Connectors In/Link	Speakon NLT4 F / M
Nominal Directivity H/V	100°x55°
Included Accessories	Z5377 Swivel Bracket Z5024 Speaker Stand Adapter Z5010 TV Spigot with Fixing Plate
Weight	5kg



Speaker

E8

Manufacturer	d & b audiotechnik
Type	Point Source
Description	2-Way Passive Enclosure
Components	1x 8" / 1x 1"
Usable Bandwidth	62Hz-18kHz
Connectors In/Link	Speakon NLT4 F / M
Nominal Directivity H/V	100°x55°
Included Accessories	Z5350 Flying Bracket Z5024 Speaker Stand Adapter Z5010 TV Spigot with Fixing Plate
Weight	7,3kg



Speaker

E12

Manufacturer	d & b audiotechnik
Type	Point Source
Description	2-Way Passive Enclosure
Components	1x 12" / 1x 1,5"
Usable Bandwidth	50Hz-18kHz
Connectors In/Link	Speakon NLT4 F / M
Nominal Directivity H/V	80°x50°
Included Accessories	Z5352 Flying Bracket Z5024 Speaker Stand Adapter Z5010 TV Spigot with Fixing Plate
Weight	16kg



Speaker

B6 Sub

Manufacturer	d & b audiotechnik
Type	Subwoofer
Description	1-Way Passive Enclosure
Components	1x 18"
Usable Bandwidth	37Hz-140Hz
Connectors In/Link	Speakon NLT4 F / M
Weight	41kg



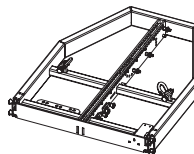
Speaker	Y7P / Y10P
Manufacturer	d&b audiotechnik
Type	Point Source
Description	2-Way Passive Enclosure
Components	1x 8" / 1x 1,4"
Usable Bandwidth	59Hz-18kHz
Connectors In/Link	Speakon NLT4 F / M
Nominal Directivity H/V	75°x40°-(110°x40°-Y10P)
Included Accessories	Z5397 Swivel Bracket Z5024 Speaker Stand Adapter Z5010 TV Spigot with Fixing Plate
Weight	18kg



Speaker	Y8 / Y12
Manufacturer	d&b audiotechnik
Type	Line Source
Description	2-Way Passive Enclosure
Components	2x 8" / 1 x 1,4"
Usable Bandwidth	54Hz-19kHz
Connectors In/Link	Speakon NLT4 F / M
Nominal Directivity H	80° (120°-Y12)
Weight	20kg



Speaker	Y Sub
Manufacturer	d&b audiotechnik
Type	Flyable Cardioid Subwoofer
Description	2-Way Passive SUB
Components	1x 18" / 1x 12"
Usable Bandwidth	39Hz-140Hz
Connectors In/Link	Speakon NLT4 F / M
Weight	52kg



Speaker	Y Flying Frame (Z5390)
Manufacturer	d&b audiotechnik
Type	Rigging Frame
Included Accessories	Y Safety Chain (Z5392) Rota Clamp (Z5147)
Weight	19kg



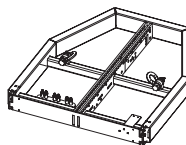
Speaker	V7P / V10P
Manufacturer	d&b audiotechnik
Type	Point Source
Description	3-Way Passive Enclosure
Components	2x 10" / 1x 8" / 1x 1,4"
Usable Bandwidth	59Hz-18kHz
Connectors In/Link	Speakon NLT4 F / M
Nominal Directivity H/V	75°x40°-(110°x40°-V10P)
Included Accessories	Z5383 Mounting Bracket Z5024 Speaker Stand Adapter Z5010 TV Spigot with Fixing Plate
Weight	33kg



Speaker	V8 / V12
Manufacturer	d&b audiotechnik
Type	Line Source
Description	3-Way Passive Enclosure
Components	2x 10" / 1x 8" / 2x 1,4"
Usable Bandwidth	67Hz-18kHz
Connectors In/Link	Speakon NLT4 F / M
Nominal Directivity H	80° (120°-V12)
Weight	34kg



Speaker	V SUB
Manufacturer	d&b audiotechnik
Type	Flyable Cardioid Subwoofer
Description	2-Way Passive SUB
Components	1x 18" / 1x 12"
Usable Bandwidth	37Hz-115Hz
Connectors In/Link	Speakon NLT4 F / M
Weight	64kg



Speaker	V Flying Frame (Z5380)
Manufacturer	d&b audiotechnik
Type	Rigging Frame
Included Accessories	V Safety Chain (Z5382)
Weight	25,4kg



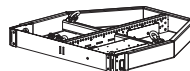
Speaker	J8 / J12
Manufacturer	d&b audiotechnik
Type	Line Source
Description	3-Way Active Enclosure
Components	2x 12" / 1x 10" / 2x 1,4"
Usable Bandwidth	48Hz-17kHz
Connectors In/Link	Speakon NLT4 F/M
Nominal Directivity H	80° (120°-J12)
Weight	60kg



Speaker	J SUB
Manufacturer	d&b audiotechnik
Type	Flyable Cardioid Subwoofer
Description	2-Way Active SUB
Components	3x 18"
Usable Bandwidth	32Hz-100Hz
Connectors In	Speakon NLT4 F
Weight	106kg



Speaker	J Infra
Manufacturer	d&b audiotechnik
Type	Cardioid Subwoofer
Description	2-Way Active SUB
Components	3x 21"
Usable Bandwidth	27Hz-60Hz
Connectors In/Link	Speakon NLT4 F
Weight	152kg



Speaker	J Flying Frame (Z5300)
Rigging	J Flying Frame (Z5300)
Manufacturer	d&b audiotechnik
Type	Rigging Frame
Included Accessories	J Safety Chain (Z5303)
Weight	65kg



Speaker	GSL8 / GSL12
Manufacturer	d&b audiotechnik
Type	Line Source
Description	3-Way Active Enclosure
Components	2x 14" / 2x 10" / 1x 10" / 3x 1,4"
Usable Bandwidth	45Hz-18kHz
Connectors In	Speakon 1x NLT4 F
Nominal Directivity V	80° (GSL12-120°)
Weight	80kg



Speaker	KSL8 / KSL12
Manufacturer	d&b audiotechnik
Type	Line Source
Description	2-Way Active Enclosure
Components	2x 10" / 2x 8" / 1x 8" / 2x 1,4"
Usable Bandwidth	54 Hz-18kHz
Connectors In/Out	NLT4 F / M
Nominal Directivity V	80° (KSL12-120°)
Weight	58kg



Speaker	XSL8 / XSL12
Manufacturer	d&b audiotechnik
Type	Line Source
Description	3-way line array
Components	LF: 2 x 8" + 2 x 6.5"; MF: 1 x 6.5"; HF: 2 x 1" exit compression driver with 2" coil
Usable Bandwidth	60 Hz - 18 kHz
Connectors In/Link	2 x NLT4 F/M
Nominal Directivity H	80° (XSL12- 120°)
Weight	39kg



Speaker	KSL SUB
Manufacturer	d&b audiotechnik
Type	Flyable Cardioid Subwoofer
Components	3 x 15"
Usable Bandwidth	36 Hz - 105 Hz
Connectors In/Link	1 x NLT4 F
Weight	82kg

coming soon



Speaker	KSL-GSUB
Manufacturer	d&b audiotechnik
Type	Cardioid Subwoofer
Components	3 x 15"
Usable Bandwidth	36 Hz - 105 Hz
Connectors In/Link	1 x NLT4 F
Weight	78kg

coming soon



Speaker	SL-SUB
Manufacturer	d&b audiotechnik
Type	Flyable Cardioid Subwoofer
Description	2-Way Active SUB
Components	3x 21"
Usable Bandwidth	33Hz-84Hz
Connectors In	NLT4 F
Weight	138kg



Speaker	SL-GSUB
Manufacturer	d&b audiotechnik
Type	Ground Cardioid Subwoofer
Description	2-Way Active SUB
Components	3x 21"
Usable Bandwidth	33Hz-84Hz
Connectors In	NLT4 F
Weight	132kg



Speaker	GSL Flying Frame
Rigging	GSL Flying Frame (Z5701)
Manufacturer	d&b audiotechnik
Type	Rigging Frame
Included Accessories	Flying Frame (Z5701); Load Beam (Z5702); Safety Chain (Z5705); SL Aiming Plate (Z5707); Hoist Connector Chain (Z5706); SL Cable Pick (Z5713); Array Sight Sender Unit (Z5711); Array Sight Meter Unit (Z5761)
Weight	80kg (Frame only)



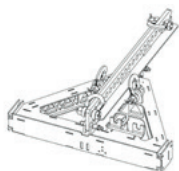
Speaker	GSL Compression Set
Rigging	GSL Compression Frame (Z5703)
Manufacturer	d&b audiotechnik
Type	Compression Set
Included Accessories	GSL Compression Frame (Z5703); SL Compression Chain 2,5t (Z5709); Compression Grab Link (B2447.073); Level Hoist (B2447.072); Compression Frame Master Link (B2447.074); Chain Bag (B2447.075)
Weight	18,6kg (Frame only)



Speaker	KSL Flying Frame
Rigging	KSL Flying Frame (Z5701)
Manufacturer	d&b audiotechnik
Type	Rigging Frame
Included Accessories	Flying Frame (Z5722); KSL Load Beam (Z5723); Safety Chain (Z5705); SL Aiming Plate (Z5707); Hoist Connector Chain (Z5705); SL Cable Pick (Z5713); Array Sight Sender Unit (Z5711); Array Sight Meter Unit (Z5761)
Weight	30,3kg (Frame only)



Speaker	KSL Compression Set
Rigging	KSL Compression Frame (Z5725)
Manufacturer	d&b audiotechnik
Type	Compression Set
Included Accessories	KSL Compression Frame (Z5725); SL Compression Chain 2,5t (Z5709); Compression Grab Link (B2447.073); Level Hoist (B2447.072); Compression Frame Master Link (B2447.074); Chain Bag (B2447.075)
Weight	16kg (Frame only)



Speaker	XSL Flyingframe Set
Rigging	XSL Flyingframe (Z5770)
Manufacturer	d&b audiotechnik
Type	Rigging Frame
Included Accessories	Fyling Frame (Z5771); Load Beam (Z5772); Sa-fety Chain (Z5775); Hoist Connector Chain (Z5776); SL Aiming Plate (Z5707); SL Cable Pick (Z5713); Array Sight Sender Unit(Z5711); Array Sight Meter Unit(Z5761)
Weight	21kg (Frame only)



Speaker	XSL Compression Set
Rigging	XSL Compression Set (Z5773)
Manufacturer	d&b audiotechnik
Type	Compression Set
Included Accessories	SL Compression Set(Z5774); XSL Com-pression Chain 1,5t (Z5789); Crank Lever Hoist (B2467.072); Compres-sion Frame Master Link (B2467.074); Chain Bag (B2447.075)
Weight	11kg (Frame only)





Speaker	M6
Manufacturer	d&b audiotechnik
Type	Monitor
Description	2-Way Stage Monitor
Components	1x 12" / 1x 1,3"
Usable Bandwidth	65Hz-17kHz
Connectors In/Link	Speakon NLT4 F / M
Nominal Directivity H/V	50°x80°
Weight	16kg



Speaker	M4
Manufacturer	d&b audiotechnik
Type	Monitor
Description	2-Way Stage Monitor
Components	1x 15" / 1x 1,3"
Usable Bandwidth	55Hz-17kHz
Connectors In/Link	Speakon NLT4 F / M
Nominal Directivity H/V	50°x70°
Weight	20kg



Speaker	M2
Manufacturer	d&b audiotechnik
Type	Monitor
Description	2-way stage monitor
Components	2 x 12" / 1 x 1,4"
Usable Bandwidth	50 Hz-17 kHz
Connectors In/Link	Speakon NLT4 F / M
Nominal Directivity H/V	45° x 60°
Weight	38kg



Speaker	DS10
Manufacturer	d&b audiotechnik
Signal Processor	Interface Dante / AES
Inputs (Digital)	4 channel (2x AES3)
Inputs	4x Ethercon
Outputs (Digital)	16 channel (8x AES 3)
Power Connection	Schuko
Weight	3,75kg



milan®

☀ Dante®

Bereit für morgen?

Wir bei d&b audiotechnik versorgen Sie mit allen notwendigen Tools, damit Sie Ihre Kreativität voll ausleben können. Deshalb haben wir unsere Flaggschiffe auch Milan™-fähig gemacht. Das bedeutet Freiheit, Flexibilität, Zuverlässigkeit und Sicherheit. Und das ganz ohne tiefgreifende IT-Managementfähigkeiten.



Bereit für morgen.

Jetzt können Sie wählen zwischen Milan™ oder Dante. Und beides mit der gleichen marktführenden Technologie von d&b audiotechnik.

Schon heute bereit für morgen.

 d&b
audiotechnik

Freedom to create



Amp	D12
Manufacturer	d&b audiotechnik
Type	2 Channel Amplified Controller
Inputs (Analog)	2x XLR3 IN + Link
Inputs (Digital)	1x XLR3 AES 3
Outputs	2x NL4 M
Power Connection	Schuko > PowerCON
Weight	13kg



Amp	D20
Manufacturer	d&b audiotechnik
Type	4 Channel Amplified Controller
Inputs (Analog)	4x XLR3 IN + Link
Inputs (Digital)	2x XLR3 AES 3
Outputs	6x NL4 M 1x NL8 M
Power Connection	Schuko > PowerCON
Weight	10,8kg



Amp	D80
Manufacturer	d&b audiotechnik
Type	4 Channel Amplified Controller
Inputs (Analog)	4x XLR3 IN + Link
Inputs (Digital)	2x XLR3 AES 3
Outputs	4x NL4 M 1x NL8 M
Power Connection	Schuko > PowerCON
Weight	19kg



Speaker	D40
Manufacturer	d&b audiotechnik
Type	4 Channel Amplified Controller
Inputs (Analog)	4x XLR3 IN + Link
Inputs (Digital)	2x XLR3 AES 3
Outputs	6 x NL4 1 x NL8
Power Connection	powerCON® TRUE1 TOP
Weight	13,8kg



Amp	D40 3er Rack
Manufacturer	d&b audiotechnik
Type	Touring Rack 3 x D40
Inputs (Analog)	4x XLR3 IN + Link
Inputs (Digital)	2x XLR3 AES 3
Outputs	3x NL4 1x NL8
Power Connection/Link	CEE 32 A Red
Weight	120kg



Amp	D80 Rack incl. DS10
Manufacturer	d&b audiotechnik
AMP	Touring Rack 3 x D80 incl. 1x DS10
Inputs (Analog)	4x XLR3 IN + LINK
Inputs (Digital)	2x XLR3 AES3
Outputs	3x NLT8 + 1x LKA25
Power Connection	CEE32 A Red
Weight	130kg



Amp	D80 3er Rack
Manufacturer	d&b audiotechnik
Type	Touring Rack 3 x D80
Inputs (Analog)	4x XLR3 IN + Link
Inputs (Digital)	2x XLR3 AES 3
Outputs	3x NL8 2x LKS19
Power Connection/Link	CEE 32 A Red
Weight	130kg



Amp	D80 6er Rack
Manufacturer	d&b audiotechnik
Type	Touring Rack 6 x D80 incl. DS10
Inputs (Analog)	4 x XLR3 IN + Link
Inputs (Digital)	2x XLR3 AES 3
Outputs	6 x NL8 2x LKA25
Power Connection/Link	CEE 32 A Red
Weight	210kg



Speaker	5XT
Manufacturer	L-Acoustics
Type	Point Source
Description	2-Way Passive Coaxial Enclosure
Components	1x 5" / 1x 1"
Usable Bandwidth	95Hz-20kHz
Connectors In/Link	SpeakON NL4
Nominal Directivity	110° Axisymmetric
Included Accessories	ETR5 U-Bracket
Weight	3,5kg



Speaker	X8
Manufacturer	L-Acoustics
Type	Point Source / Monitor
Description	2-Way Passive Coaxial Enclosure
Components	1x 8" / 1x 1,5"
Usable Bandwidth	60Hz-20kHz
Connectors In/Link	SpeakON NL4
Nominal Directivity	100° Axisymmetric
Monitoring Angle	35°
Included Accessories	X-US8
Weight	12kg



Speaker	X12
Manufacturer	L-Acoustics
Type	Point Source / Monitor
Description	2-Way Passive Coaxial Enclosure
Components	1x 12" / 1x 3"
Usable Bandwidth	59Hz-20kHz
Connectors In/Link	SpeakON NL4
Nominal Directivity V/H	90°x60°
Monitoring Angle	35° / 55°
Weight	20kg



Speaker	X15 HIQ
Manufacturer	L-Acoustics
Type	Point Source / Monitor
Description	2-Way Active Coaxial Enclosure
Components	1x 15" / 1x 3"
Usable Bandwidth	55Hz-20kHz
Connectors In/Link	SpeakON NL4
Nominal Directivity V/H	60°x40°
Monitoring Angle	35° / 55°
Weight	21kg



Speaker	ARCS WIDE
Manufacturer	L-Acoustics
Type	WST Line Source
Description	2-Way Passive Enclosure
Components	1x 12" / 1x 3"
Usable Bandwidth	55Hz-20kHz
Connectors In/Link	SpeakON NL4
Nominal Directivity V/H	30°x90°
Included Accessories	2x Coupling Bar
Weight	36kg



Speaker	ARCS FOCUS
Manufacturer	L-Acoustics
Type	WST Line Source
Description	2-Way Passive Enclosure
Components	1x 12" / 1x 3"
Usable Bandwidth	55Hz-20kHz
Connectors In/Link	SpeakON NL4
Nominal Directivity V/H	15°x90°
Included Accessories	2x Coupling Bar
Weight	38kg



Speaker	ARCS II
Manufacturer	L-Acoustics
Type	WST Line Source
Description	2-way active enclosure
Components	1 x 15" / 1 x 3"
Usable Bandwidth	50 Hz-20 kHz
Connectors In/Link	SpeakON NL4
Nominal Directivity V/H	22,5° x 60°
Included Accessories	2 x coupling bar
Weight	50kg

Accessories ARCS

L-Acoustics ARCBUMB
L-Acoustics BUMP 3
L-Acoustics LIFTBAR for 2x BUMP 3
L-Acoustics WIFOBUMP
L-Acoustics X-US1215
L-Acoustics X-UL12
L-Acoustics X-UL15



Speaker	KIVA II
Manufacturer	L-Acoustics
Type	Line Source
Description	2-Way Passive WST Enclosure
Components	2x 6,5" / 1x 1,75"
Usable Bandwidth	70Hz-20kHz
Connectors In/Link	SpeakON NL4
Nominal Directivity H	100°
Weight	14kg



Speaker	KARA II
Manufacturer	L-Acoustics
Type	Line Source
Description	2-way active, dual 8"
Components	LF: 2 x 8" HF: 1 x 3"
Usable Bandwidth	55 Hz- 20 KHz
Connectors In/Link	SpeakON NL4
Nominal Directivity H	70° / 110° symmetric or 90° asymmetric
Weight	26kg



Speaker	K2
Manufacturer	L-Acoustics
Type	Line Source
Description	3-Way Active WST Enclosure
Components	2x 12" / 4x 6,5" / 2x 3"
Usable Bandwidth	35Hz-20kHz
Connectors In/Link	CA-Com 8 Pin
Nominal Directivity H	110° / 70° Symmetric
Weight	56kg

Accessories X Serie / K Serie

L-Acoustics KIET II
 L-Acoustics KS28 BUMP
 L-Acoustics LARAKBUMP


Speaker SB15m

Manufacturer	L-Acoustics
Type	Flyable Subwoofer
Description	1-Way SUB
Components	1x 15"
Low Frequency Limit	40Hz
Connectors In/Link	SpeakON NL4
Included Accessories	Coupling Bars
Weight	36kg


Speaker SB18m

Manufacturer	L-Acoustics
Type	Flyable Subwoofer
Description	1-Way SUB
Components	1x 18"
Low frequency Limit	32Hz
Connectors In/Link	SpeakON NL4
Weight	52kg


Speaker KS28

Manufacturer	L-Acoustics
Type	Flyable Subwoofer
Description	1-Way SUB
Components	2x 18"
Low Frequency Limit	25Hz
Connectors In	SpeakON NL4
Weight	79kg


Speaker K1-SB

Manufacturer	L-Acoustics
Type	Flyable Subwoofer
Description	1-Way SUB
Components	2x 15" / 1x 4"
Low Frequency Limit	30Hz
Connectors In	SpeakON NL4
Weight	83kg



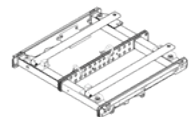
Bump **BUMPFLIGHT - 2 K2**

Bump	
Manufacturer	L-Acoustics
Type	Rigging Frame K2
Case Included	2x K2-Bump 2x K2-Bar 2x K1-Delta 4x K2-Link 2x K2 Lasermount 2x K1 BPCHAIN



Bump **MBUMP**

Manufacturer	L-Acoustics
Type	Kara / SB18 Rigging Frame
Case Included	1x MBUMP 1x M-BAR 1x KARA Pullback



Bump **KIBU-SB**

Manufacturer	L-Acoustics
Type	KIVAII / SB15 Rigging Frame
Case Included	1x KIBU-SB 2x Coupling Bar
Optional Accessories	KIVA Pullback



Bump **MAUI P900B**

Manufacturer	LD Systems
Type	Self-Powered Speaker
Components	32x 1" + 16x 2,8" + 2x 10"
Usable Bandwidth	42-20.000Hz
Connectors In / Link	XLR
Nominal Directivity	140°x15°
Weight	46kg
Special	Bluetooth



Amp	LA12X
Manufacturer	L-Acoustics
Type	4 Channel Amplified Controller
Inputs (Analog)	4x Analog XLR Input + Linkout
Inputs (Digital)	2x AES / EBU (4 Channels)
Outputs	1x CA-COM 2x SpeakON NL4
Power Connection	PowerCON 32A
Weight	14,5kg



Amp	LA4X
Manufacturer	L-Acoustics
Type	4 Channel Amplified Controller
Inputs (Analog)	4x Analog XLR input + Linkout
Inputs (Digital)	2x AES / EBU (4 Channels)
Outputs	4x SpeakON NL4
Power Connection	Schuko > PowerCON
Weight	11,3kg



Amp	LA-RAK II
Manufacturer	L-Acoustics
Type	Systemamprack, Flyable
Inputs Front	2x CA-COM (19 Pin); 3 AES / EBU
Inputs Back	6x XLR (Analog); 3x AES / EBU
Outputs	3x CA-COM / 6x SpeakON NL4
Power Connection/Link	CEE 32A Red
Weight	111,5kg



Receiver	ULXD4D
Manufacturer	Shure
Type	Receiver
Channel	2 Channel
Frequency Range	H51-537-598MHz
Dante	Primary / Secondary
Power Connection	Schuko



Receiver	ULXD4Q
Manufacturer	Shure
Type	Receiver
Channel	4 Channel
Frequency Range	H51-537-598MHz
Dante	Primary / Secondary
Power Connection	Schuko



Transmitter	ULXD1
Manufacturer	Shure
Type	Transmitter
Transmitter Type	Beltpack
Frequency Range	H51-537-598MHz
MIC Connection	TA4F



Transmitter	ULXD2
Manufacturer	Shure
Type	Transmitter
Transmitter Type	Handheld
Frequency Range	H51-537-598MHz
Available Capsules	SM58, Beta58, Beta87 A, KSM9



Receiver	AD4D
Manufacturer	Shure
Type	Receiver
Channel	2 Channel
Frequency Range	G56 470-636MHz
Dante	Primary / Secondary
Power Connection	Schuko



Receiver	AD4Q
Manufacturer	Shure
Type	Receiver
Channel	4 Channel
Frequency Range	G56 470-636MHz
Dante	Primary / Secondary
Power Connection	Schuko



Transmitter	AD1
Manufacturer	Shure
Type	Transmitter
Transmitter Type	Beltpack
Frequency Range	G56 470-636MHz
MIC Connection	TA4F



Transmitter	AD2
Manufacturer	Shure
Type	Transmitter
Transmitter Type	Handheld
Frequency Range	G56 470-636MHz
Available Capsules	SM58, Beta58, Beta87 A, KSM9, KSM8





Transmitter	ADX1
Manufacturer	Shure
Type	Transmitter
Transmitter Type	Beltpack
Frequency Range	G56 470-636MHz
MIC Connection	TA4F



Distribution	UA845UWB-E
Manufacturer	Shure
Type	Splitter
Connection of 4 Receivers	ULXD4D; ULXD4Q; AD4D; AD4Q
Power Connection	Schuko



Transmitter	ADX2
Manufacturer	Shure
Type	Transmitter
Transmitter Type	Handheld
Frequency Range	G56 470-636MHz
Available Capsules	SM58, Beta58, Beta87 A, KSM9



Frequency Management	AD610 Showlink
Manufacturer	Shure
Type	Frequency Management Access Point
Usable	Axient Analog / Axient Digital
Power Connection	Schuko

Frequency Management	AD600E
Manufacturer	Shure
Type	Frequency Management
Usable	Axient Digital
Power Connection	Schuko



Antenna	UA874 Active Antenna Set
Manufacturer	Shure
Type	Antenna
Including	2x UA874 + 2x 25m BNC
Connection	BNC

Frequency Management	AXT600
Manufacturer	Shure
Type	Frequency Management
Usable	Axient Analog / Axient Digital
Power Connection	Schuko



Antenna	HA8089 Helical
Manufacturer	Shure
Type	Antenna
Including	1x HA8089 + 1x 25 m BNC
Connection	BNC





Receiver

EM6000 / EM6000
Dante

Manufacturer	Sennheiser
Type	Receiver
Channel	2 Channel
Frequency Range	470MHz-714MHz
Dante	Primary / Secondary
Power Connection	Schuko



Transmitter

SK6000

Manufacturer	Sennheiser
Type	Transmitter
Transmitter Type	Beltpack
Frequency Range	470MHz-558MHz (A1-A4)
MIC Connection	LEMO



Transmitter

SKM6000

Manufacturer	Sennheiser
Type	Transmitter
Transmitter Type	Handheld
Frequency Range	470MHz-558MHz (A1-A4)
Available Capsules	MMK 965, MD 9235



Charger

L6000
inkl. 8 x BA60

Manufacturer	Sennheiser
Type	Charging Station
Usable	for SKM 6000



Microphone **d:fine CORE 6066**

Manufacturer	DPA
Type	Headset Dual Ear
Colour	Beige
Characteristic	Omnidirectional
Including	DPA DAD 6003; DPA DAD 6010



Microphone **d:fine 66**

Manufacturer	DPA
Type	Headset Dual Ear
Colour	Beige, Black
Characteristic	Omnidirectional
Including	DPA DAD 6003; DPA DAD 6010



Microphone **d:fine 88**

Manufacturer	DPA
Type	Headset Dual Ear
Colour	Beige, Black
Characteristic	Cardioid
Including	DPA DAD 6003; DPA DAD 6010



**4488 CORE
Directional Headset
Mic**

Microphone	
Manufacturer	DPA
Type	Dual Ear
Colour	Beige
Characteristic	Directional



Microphone **d:screet 4080**

Manufacturer	DPA
Type	Clip
Colour	Black
Characteristic	Cardioid
Including	DPA DAD 6003; DPA DAD 6010



Microphone **d:screet 4060**

Manufacturer	DPA
Type	Clip
Colour	Beige
Characteristic	Omnidirectional
Including	DPA DAD 6003; DPA DAD 6010



Microphone **d:screet 4061**

Manufacturer	DPA
Type	Clip
Colour	Beige
Characteristic	Omnidirectional
Including	DPA DAD 6003; DPA DAD 6010



Microphone **Shure WL184**

Manufacturer	Shure
Type	Clip
Colour	Black
Characteristic	Cardioid
Connector	TA4



Transmitter	Sennheiser ME36
Manufacturer	Sennheiser
Type	Speaker Microphone
Colour	Black
Characteristic	Super Cardioid / Lobar
Including	MZH 3042; MAT 133 S



Transmitter	P10T
Manufacturer	Shure
Type	Transmitter
Channel	2 Channel
Frequency Range	626-698MHz (L8E)
Power Connection	Schuko



Receiver	P10R
Manufacturer	Shure
Type	Receiver
Transmitter Type	Beltpack
Frequency Range	626-698MHz (L8E)
Included Accessories	SE215 Earphone



Combiner	PA821
Manufacturer	Shure
Type	Combiner
Connection of 8 Channel Transmitters	P4T, P6T, P7T, P9T, P10T
Power Connection	Schuko



Combiner	PA421
Manufacturer	Shure
Type	Combiner
Connection of 4 Channel Transmitters	P4T, P6T, P7T, P9T, P10T
Power Connection	Schuko





Antenna **PA805 Set**

Manufacturer	Shure
Type	Antenna
Including	1x PA805 + 1x 25m BNC
Connection	BNC



Antenna **HA8089 Helical**

Manufacturer	Shure
Type	Antenna
Including	1x HA8089 + 1x 25m BNC
Connection	BNC



Combiner **Shure 4 Channel IEM Rack**

Manufacturer	Shure
Type	Transmitter / Receiver
Power connection	Schuko
Including	1x Shure PA421 Combiner 2x Shure P10T 4x Shure P10R+





Transmitter **Sennheiser SR2050**

Manufacturer	Sennheiser
Type	Transmitter
Channel	2 Channel
Frequency Range	470-558MHz
Power Connection	Schuko



Receiver **Sennheiser EK 2000**

Manufacturer	Sennheiser
Type	Receiver
Transmitter Type	Beltpack
Frequency Range	470-558MHz
Included Accessories	IE4 Earphone



Combiner **Sennheiser AC3200-II**

Manufacturer	Sennheiser
Type	Antenna Combiner
Connector Channel	8
Power Connection	Schuko



Combiner **Sennheiser AC-41**

Manufacturer	Sennheiser
Type	Antenna Combiner
Connector Channel	4
Power Connection	Schuko

VIDEO | AUDIO | LIGHTING | RIGGING

Your Distributor & Reseller for Professional Event Technology

publitec Präsentationssysteme & Eventservice GmbH
Steinbrinkstraße 61
D-44319 Dortmund
Phone: +49 231 9996160
eMail: info@publitec.tv
Web: www.publitec.tv





Console	Yamaha DM7
Manufacturer	Yamaha
Type	Digital Audio Console
Input	120 Mono
Mix Buses	48
Matrices	12+2
Analog Inputs	32
Analog Outputs	16
Digital In/Out AES/EBU	2 / 4



Console	Yamaha DM7 Compact
Manufacturer	Yamaha
Type	Digital Audio Console
Input	72 Mono
Mix Buses	48
Matrices	12 + 2
Analog Inputs	16
Analog Outputs	16
Digital In/Out AES/EBU	1 x out



Console	Yamaha DM7 Control
Manufacturer	Yamaha
Type	Expansion Controller



Studio Monitor	MSP5 Studio
Manufacturer	Yamaha
Type	Biamp 2-Way Powered Speaker
Frquency Response	50Hz-40kHz
Components	5" Cone / 1" Titanium Dome
I/O Connectors	XLR3-31 Type, Phone



Console		Yamaha Rivage PM7
Manufacturer	Yamaha	
Type	Digital Audio Console	
Input	120 Mono	
Mix Buses	60	
Matrices	24	
Analog Inputs	8	
Analog Outputs	8	
Digital In/Out AES/EBU	4 / 4	
Expansions Slots HY	3	
Expansions Slots MY	2	



Console		Yamaha CL5
Manufacturer	Yamaha	
Type	Digital Audio Console	
Input	72 Mono + 8 Stereo	
Mix Buses	24	
Matrices	8	
Analog Inputs	8	
Analog Outputs	8	
Dante I/O	Primary / Secondary	



Console		Yamaha CL3
Manufacturer	Yamaha	
Type	Digital Audio Console	
Input	64 Mono + 8 Stereo	
Mix Buses	24	
Matrices	8	
Analog Inputs	8	
Analog Outputs	8	
Dante I/O	Primary / Secondary	



Console		Yamaha CL1
Manufacturer	Yamaha	
Type	Digital Audio Console	
Input	48 Mono + 8 Stereo	
Mix Buses	24	
Matrices	8	
Analog Inputs	8	
Analog Outputs	8	
Dante I/O	Primary / Secondary	



Console

Yamaha QL5

Manufacturer	Yamaha
Type	Digital Audio Console
Input	64 Mono + 8 Stereo
Mix Buses	16
Matrices	8
Analog Inputs	32
Analog Outputs	16
Dante I/O	Primary / Secondary



Console

Yamaha QL1

Manufacturer	Yamaha
Type	Digital Audio Console
Input	32 Mono + 8 Stereo
Mix Buses	16
Matrices	8
Analog Inputs	16
Analog Outputs	8
Dante I/O	Primary / Secondary

Console

TF1

Manufacturer	Yamaha
Type	Digital Audio Console
Input	32 Mono + 2 Stereo + 2 Return
Aux Buses	20 (8 Mono + 6 Stereo)
Analog Inputs	16
Analog Outputs	16



Console

Yamaha DM3

Manufacturer	Yamaha
Type	Digital Audio Console
Input	16 Mono + 1 Stereo + 2 FX Return
Aux Buses	1 Stereo, 6 Mix, 2 FX, 2 Matrix



Interfaces	Rio3224-D
Manufacturer	Yamaha
Type	Stagebox
Analog Inputs	32
Analog Outputs	16
AES/EBU Outputs	8 (4 St)
Dante I/O	Primary / Secondary



Interfaces	Rio1608-D
Manufacturer	Yamaha
Type	Stagebox
Analog Inputs	16
Analog Outputs	8
AES/EBU Outputs	0
Dante I/O	Primary / Secondary



Interfaces	Rio3224-D2
Manufacturer	Yamaha
Type	Stagebox
Analog Inputs	32
Analog Outputs	16
AES/EBU Outputs	8 (4 St)
Dante I/O	Primary / Secondary



Interfaces	Rio1608-D2
Manufacturer	Yamaha
Type	Stagebox
Analog Inputs	16
Analog Outputs	8
AES/EBU Outputs	0
Dante I/O	Primary / Secondary



Interfaces	Ri8-D
Manufacturer	Yamaha
Type	Stagebox
Analog Inputs	8
Analog Outputs	0
AES/EBU Outputs	0
Dante I/O	Primary / Secondary



Interfaces	Ro8-D
Manufacturer	Yamaha
Type	Stagebox
Analog Inputs	0
Analog Outputs	8
AES/EBU Outputs	0
Dante I/O	Primary / Secondary



Interfaces	RMio64-D
Manufacturer	Yamaha
Type	Converter
MADI IN 1-64	BNC Connector / SC Connector
MADI OUT 1-64	BNC Connector / SC Connector
Dante I/O	Primary / Secondary
Analog Outputs	16



Interfaces	SWP1-16MMF
Manufacturer	Yamaha
Type	Dante Switch
Lan Ports	12 (Ethercon)
Lan Ports	4 RJ45 Connector
SFP ports	2 (OpticalCON Duo)



Accessories

Klotz Fiber Link 150m PUR OM3 OpticalConDuo

Klotz Fiber Link 250m PUR OM3 OpticalConDuo

Connex Fast Ethernet CAT6 Drum, 75m



Cable

**EBC15 OM3 4CH
MultiMode**

Manufacturer

FiberFox

Length

150m



Image Similar

NicLen Multiset LKA25 Set 1

Cable	
Manufacturer	NicLen
Type	Speaker Cable
Including	1x 30m LKA25 1x 27,5m LKA25 2x Splitt 3x NLT8 > LKA25 2x Splitt LKA25 > 6x NLT4



Image Similar

NicLen Multiset LKA25 Set 2

Cable	
Manufacturer	NicLen
Type	Speaker Cable
Including	2x 25m LKA25 2x Splitt 3x NLT8 > LKA25 2x Splitt LKA25 > 6x NLT4



Image Similar

NicLen Multi Set

Cable	
Manufacturer	NicLen
Type	Speaker Cable
Including	3x Adapter PA-Com > NLT 8 (Use for L-Acoustic Systems only) 3x NLT8 10m 3x NLT8 25m 3x Splitt NLT8 > 2x NL4 3x Splitt NLT8 > 4x NL4 3x Splitt NLT8 > 3x NL4 6x NLT4 Gender Changer (Use for d&b Sub J/SL Series only)



Image Similar

NicLen NLT4 Set

Cable	
Manufacturer	NicLen
Type	Speaker Cable
Including	20x 1m 10x 2,5m 20x 5m 18x 10m 8x 20m



Image Similar

K2 PA-Com Cable Set

Cable	
Manufacturer	NicLen
Type	Speaker Cable
Including	6x 25m 3x 10m 12x 1m



Image Similar

NicLen Multi Set-L- Acoustics

Cable	
Manufacturer	NicLen
Type	Speaker Cable
Including	3x DO10 3x DO25 3x DOFILL 3x DOSUB 3x DO 3-Way Fill 3x DO Connector



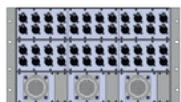
Image Similar

NicLen NL4 Set

Cable	
Manufacturer	NicLen
Type	Speaker Cable
Including	20x 1m 10x 2,5m 20x 5m 18x 10m 8x 20m 10x Spooky



Case	
Manufacturer	Amptown
Dimensions	120 x 60 x 80cm
Colour	Black
Special	Incl. 2 Case Dividers



Signal Splitt

passive 48 Channel Stage Splitt

Manufacturer	Sommer
Type	NF Splitt
Inputs	48x XLR (m)
Outputs	LKS150 ISO LKS150 DIR LKS150 DIR 48x XLR (f) ISO
Accessories	3x Splitt LKS150 > 48x XLR (m) 7,5m
Special	Inputpatch 8x LKS25 In > 64x XLR (M)

Compatible with NicLen
Subsnake Case



Image Similar

Cable

NicLen Subsnake Set

Manufacturer	NicLen
Type	NF Cable
Including	2x Sommer Cable Floorbox TBWH P08/08 2x Sommer Cable FloorboxTBWM M08/00 4x cable LK25 10m 4x cable LK25 25m 4x LK25 splitt > 8x XLR m

Compatible with Som-
mer Passive Splitter



Cable

NicLen XLR3 Set small / large

Manufacturer	NicLen	
Type	NF Cable	
Including	Large	Small
	75x 1,5m 75x 2,5m 50x 5m 30x 10m 10x 25m	30 x 1,5 m 30 x 2,5 m 25 x 5 m 25 x 10 m 5 x 25 m



Cable

opticalCon DUO Multimode

Manufacturer	Klotz
Type	Fiber Flex ULTRA Cable 2 Fibres
Length	150m

Image Similar



NicLen Chainhoist Cable System 16A 4Pin

NicLen Set 1: 8x 5m; 8x 10m; 8x 15m;
2x HAN16 20m;
2x Hoist Break-Out (Rigg)

NicLen Set 2: 25x 10m; 25x 15m

NicLen Set 3: 25x 25m

Image Similar



Powerlock Sets

Powerlock 400A 5m

Powerlock 400A 15m

Powerlock Adapter 2,5m 125A CEE

Powerlock Adapter 2,5m 150mm³ Ring
Eyelet

Image Similar



HMI Arri Cable System Event

5m

10m

20m

Image Similar



Multicore

NicLen Harting 16E 5m / 10 m **Set 6 Pieces x 5m / 6
Pieces x 10m**

NicLen Harting 16E 20m **Set 6 Pieces**

NicLen Harting 16E 30m **Set 4 Pieces**

NicLen Harting 16E 50m **Set 2 Pieces**

NicLen Socapex 5m/10m ** Set 6 Pieces 5m / 6 pieces
10m **

NicLen Socapex 20m ** Set 6 Pieces **

NicLen Socapex 30m ** Set 4 Pieces **

Image Similar



HMI Arri Cable System Veam

VEAM 575 / 1.200W, 7m

VEAM 2500 / 4.000W, 7m

VEAM 6000 / 12.000W, 15m

Image Similar



Break Outs

NicLen Schuko Breakout Harting
16 Female / Male > 6x Schuko Female
Set 8 Pieces

CEE 3 x 32A Blue Female > Plugbox HAN 6E

Socket 32A > 3x 32A Blue **Set 2 Pieces**

Plugbox HAN 16E Male > 6x CEE 16A Blue Female
& 1x HAN 16E Female Link

NicLen Socapex Breakout Socapex f/m > 6X 16A
Single Phase **Set 8 pieces**



Image Similar

CEE Cable Sets

NicLen CEE 16A Blue Set:
20x 2,5m; 20x 5m; 15x 10m; 5x 15m

NicLen CEE 16A Red Set:
15x 2,5m; 15x 5m; 10x 10m; 5x 15m

CEE Set 32A Blue Cable 5x 5m, 5x 10m

CEE Set 32A Cable 10x 10m

CEE Set 32A Cable 6x 20m

CEE Set 63A Cable 3x 10m

CEE Set 63A Cable 2x 20m

CEE Set 125A Cable 2x 10m

CEE Set 125A Cable 1x 20m

Adapter CEE 16A Blue > Schuko **Set 20 Pieces**

Adapter CEE 16A Blue > PowerCON **Set 20 Pieces**

Adapter CEE 16A Blue > PowerCON TRUE1
Set 20 Pieces

Adapter CEE 16A > CEE 32A **Set 5 Pieces**

Adapter CEE 16A Red Male > HAN 16E Female, 1,5m

CEE 63A Adapter Male > CEE 125A Female

CEE 32A black 2,5m/5m **Set 10 Pieces 2,5m / 10 Pieces 5m**

CEE 32A black 50m **Set 3 Pieces 50m**

CEE 63A black 2,5m **Set 10 Pieces 2,5m**

CEE 63A black 5m **Set 6 Pieces 5m**

CEE 63A black 50m **Set 1 Piece**

CEE 125A black 5m **Set 4 Pieces**



Image Similar



Image Similar

PowerCON & TRUE1 Cable Set

PowerCON Set: 25x 2,5m; 25x 5m; 15x 10m; 10x Spooky

TRUE1 Set: 25x 2,5m; 25x 5m; 15x 10m

TRUE1 Pugbox Set: NicLen Harting Breakout HAN 16 f / m > 6x TRUE1/PowerCON **Set 4 Pieces** & 8x Adapter TRUE1 > Schuko 3-Way

NicLen Adapter Schuko > Powercon T1 ** Set 12 Pieces**

Hybrid Cable Set

PowerCON / DMX5P Patch Cable 2,5m **Set 40 Pieces**

TRUE1 / DMX5P Patch Cable 2,5m **Set 40 Pieces**

TRUE1 / DMX5P Patch Cable 10m **Set 25 Pieces**



DigiCat4DMX Set

1x Patch 5-2 / 2x Box 5P Female

Schuko Cable Sets



Schuko Set 1:
25x 2,5m; 25x 5m;
15x 10m; 5x 15m;
30x Schuko 3-Way Adapter



Schuko Set 2:
15x 10m; 15x 15m; 15x 20m; 20x Schuko 3-Way Adapter



Schuko Set 3:
50x Schuko 3-Way Adapter



Image Similar

Cable

CAT6 Cable Set

Including

RJ45
 20x 1m
 10x 5m
 10x 10m
 5x 20m
EtherCON:
 10x 5m
 10x 10m
 5x 20m
 5x 30m
 20x Coupler



HDMI Cable Set I

10x 1,5m, 10x 3m, 10x 5m, 10x 7,5m, 10x 10m



HDMI Cable Set II

20x 1,5m, 20x 3m, 20x 5m, 20x 7,5m, 20x 10m



Niclen Link Cable Set for Absen PL2.9V10

12xEthercon 1m, 12xPowerCON TRUE1 Link 1m



BNC/SDI Cable Set I

10x 1,5m, 10x 3m, 10x 5m, 10x 7,5m, 10x 10m,
5x 20m, 10x Coupler

BNC/SDI Cable Set II

20x 1,5m, 20x 3m, 20x 5m, 20x 7,5m, 20x 10m,
10x 20m, 20x Coupler

DVI Cable Set I

10x 1,5m, 10x 3m, 10x 5m, 10x 7,5m, 10x 10m,
3x 15m

DisplayPort Cable Set I

10x 1,5m, 10x 3m, 10x 5m, 10x 7,5m, 5x 10m



Image Similar

DMX Cable Set

NicLen DMX 5P Set: 75x 1,5m; 75x 2,5m; 50x 5m;
30x 10m; 10x 25m

NicLen DMX 5P Set Small: 35x 1,5m; 35x 2,5m; 25x
5m; 15x 10m; 5x 25m

NicLen XLR 3P Set: 75x 1,5m; 75x 2,5m; 50x 5m;
30x 10m; 10x 25m

NicLen XLR 3P Set Small: 30x 1,5m; 30x 2,5m; 25x
5m; 25x 10m; 5x 25m

NicLen DMX Adapter Ring **Set: 40 Pieces**

NicLen DMX Adapter Ring **Set: 20 Pieces**



Powerstation	C12B
Manufacturer	Stage Smarts
Type	63A > 12CH x 16A RCBO > 2x HAN16



Powerstation	C24B
Manufacturer	Stage Smarts
Type	63A > 24CH x 16A RCBO > 4x HAN16

Power Distribution

AC400 Powerstation Powerlock 400A > Loop > 48 CH x 16A > 20x HAN16 Hot-
patch

AC400-1 Powerstation Powerlock 400A > Loop 4x 125A, 4x 63A, 4x 32A, 9x
Schuko

AC400-2 Powerstation Powerlock 400A > 4x 63A, 8x 32A

AC 32 Powerstation 32A > 12x Schuko 2x HAN16

AC 32 Powerstation 32A > 3x 16A

AC 32 Powerstation 32A > 2x HAN16 + 3x Schuko

AC 63 Powerstation 63A > 6x 16A, 1x Schuko

AC 63 Powerstation 63A > 2x 32A

AC 63 Powerstation 32A > 4x HAN16 + 3x Schuko

AC 63 Powerstation 63A > 18 CH 16A > 8x HAN16 Hotpatch

AC 125 Powerstation 125A > 4x 32A

AC 125 Powerstation 125A > 2x 63A

AC 125 Powerstation 125A > 8x HAN16 + 3 x Schuko

Art 2000 Avolite ART2000 Powerrack incl. 4x Art 2000 Dimmer 12x 16A,
Hot-Patch / CPU

Art 2000 Switch 12x 16A

Hot Patch Bay 24CH - 4 x HAN16 in > 8 x HAN16 Out



Powerstation	C72tv
Manufacturer	Stage Smarts
Type	400A > Loop > 72CH x 16A RCBO > 12x HAN16



Image Similar

Expotruss X4-K30 / FD 34 – silver / black

Expotruss X4-K30 / FD 34-21cm

Expotruss X4-K30 / FD 34-25cm

Expotruss X4-K30 / FD 34-29cm

Expotruss X4-K30 / FD 34-30cm

Expotruss X4-K30 / FD 34-33cm

Expotruss X4-K30 / FD 34-40cm

Expotruss X4-K30 / FD 34-50cm

Expotruss X4-K30 / FD 34-100cm

Expotruss X4-K30 / FD 34-200cm

Expotruss X4-K30 / FD 34-300cm

Expotruss X4-K30 J-190 / 45° Corner

Expotruss X4-K30 J-210 / 90° Corner

Expotruss X4-K30 J-300 / 90° Corner + Down

Expotruss X4-K30 J-350 / T-Joint

Expotruss X4-K30 J-400 / T-Joint + Down

Expotruss X4-K30 J-410 / X-Joint

Expotruss X4-K30 J-550 / X-Joint + Down

Expotruss X4-K30 / 8-Way / X-Joint

Expotruss X4-K30 Book Swivel 0°-180°

Expotruss X4-K30 Baseplate Male 30x30cm

Expotruss X4-K30 Spacer Silver **Set 24 Pieces**

Expotruss X4-K30 Spigot Swivel **set 24 Pieces**

Expotruss X4-K30 Pins / Clips **Set 200 Pieces**

Expotruss X4-K30 Pins / Clips **Set 700 Pieces**



Image Similar

Circles FD 34 / X4-K30 – silver / black

Expotruss X4-K30 Circle 3m $\frac{1}{4}$

Expotruss X4-K30 Circle 4m $\frac{1}{4}$

Expotruss X4-K30 Circle 5m $\frac{1}{4}$

Expotruss X4-K30 Circle 6m $\frac{1}{8}$

Expotruss X4-K30 Circle 7m $\frac{1}{8}$

Expotruss X4-K30 Circle 8m $\frac{1}{8}$

Expotruss X4-K30 Circle 10m $\frac{1}{12}$

Expotruss X4-K30 Circle 12m $\frac{1}{12}$

Expotruss X4-K30 Circle 14m $\frac{1}{16}$

Expotruss X4-K30 Circle 16m $\frac{1}{20}$

Expotruss X4-K30 Circle 24m $\frac{1}{52}$

Circles FD 44 / X4-K40 – silver / black

Expotruss X4-K40 / HD Circle 10m $\frac{1}{12}$ Black

Expotruss X4-K40 / HD Circle 12m $\frac{1}{16}$ Black

Expotruss X4-K40 / HD Circle 16m $\frac{1}{20}$ Black

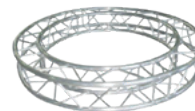


Image Similar

Prolyte X30D-silver / black



Prolyte X30D-L021

Prolyte X30D-L025

Prolyte X30D-L029

Prolyte X30D-L050

Prolyte X30D-L100

Prolyte X30D-L200

Prolyte X30D-L300

Prolyte X30D-C003 90° Corner

Prolyte X30D-C012 3-Way Corner R.AD

Prolyte X30D-C013 3-Way Corner L.AD

Prolyte X30D-C017 3-Way T-Joint Horizontal

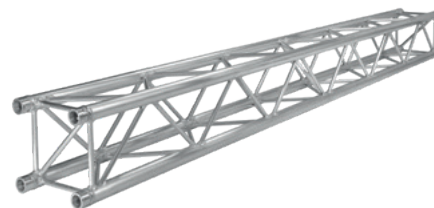
Prolyte X30D-C020 4-Way T-Joint + Down

Prolyte X30D-C021 5-Way Cross Vertical

Prolyte X30D Baseplate

Prolyte Pins / Clips **Set 200 Pieces**

Prolyte Spigot **Set 80 Pieces**



Prolyte H30V-silver / black

Prolyte H30V-L021

Prolyte H30V-L025

Prolyte H30V-L029

Prolyte H30V-L050

Prolyte H30V-L100

Prolyte H30V-L200

Prolyte H30V-L300

Prolyte H30V-C003 90° Corner

Prolyte H30V-C012 90° + Down

Prolyte H30V-C017 3-Way T-Joint

Prolyte H30V-C020 4-Way T-Joint + Down

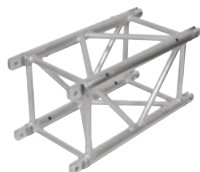
Prolyte H30V Baseplate

Prolyte Pins / Clips **Set 200 Pieces**

Prolyte Spigot **Set 80 Pieces**



Orange Spigot



Expotruss X4G-35-silver / black

Expotruss SL 1G1 390mm

Expotruss SL 1G1,5 470mm

Expotruss SL 1G2 666mm

Expotruss SL 1G4 1.243mm

Expotruss SL 1G6 1.820mm

Expotruss SL 1G8 2.400mm

Expotruss SL 1G9 2.670mm

Expotruss / Slick GS Type A 1G4W / A / M + F CB
6-Way

Expotruss / Slick GS Type B 1G4W / B / M + F CB
6-Way

Expotruss / Slick GS Type A 1G4W / A / F CB 5-Way

Expotruss / Slick GS Type B 1G4W / B / F CB 5-Way

Expotruss / Slick GS Type A 1G90 / A / F CB 90° + F

Expotruss / Slick GS Type B 1G90 / B / F CB 90° + F

Expotruss / Slick GS 1G90 90° Corner

Expotruss / Slick GS Type A 1G3W / A / F CB T-Cor-
ner + F

Expotruss / Slick GS Type B 1G3W / B / F CB T-Cor-
ner + F

Expotruss / Slick GS 1GSSH / V / H Swivel Horizontal

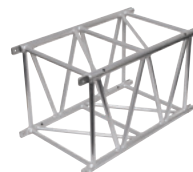
Expotruss / Slick GS 1GBP / M Baseplate Male

Expotruss / Slick GS Baseplate Female 70x70 Steel

Expotruss / Slick GS 1GHL / F / A Headplate Female

Expotruss / Slick Pin / Clips Case **Set 100 Pieces**

Expotruss / Slick Pin / Clips Case **Set 200 Pieces**



Expotruss X4G-62-silver / black

Expotruss SL X4G-62 M12 / BB 1.200mm

Expotruss SL X4G-62 M16 / BB 1.626mm

Expotruss SL X4G-62 M24 / BB 2.400mm

Expotruss / Slick MB M5 CB 4-Way Black

Expotruss / Slick Pin/Clips Case **Set 100 Pieces**

Expotruss / Slick Pin/Clips Case **Set 200 Pieces**

Circles Expotruss X4G-62-silver / black

Expotruss / Slick X4G-62 Spacer, 165mm, $\frac{1}{30}$ Circle 24m Black

Expotruss / Slick X4G-62 Spacer, 139mm, $\frac{1}{41}$ Circle 32m Black

Expotruss / Slick X4G-62 Spacer, 121mm, $\frac{1}{52}$ Circle 40m Black

Expotruss / Slick Tower System

Expotruss / Slick 2GB / Z Basement 2t

Expotruss / Slick 2GB / Z Basement Outrigger

Expotruss / Slick 1GTB / GS / FL Sleeve Block

Expotruss / Slick 2GH Top 2t

Expotruss / Slick 2GH / S Top 2t Short



Expotruss X4-K40H-silver / black

- Expotruss X4-K40H L-250
- Expotruss X4-K40H L-500
- Expotruss X4-K40H L-1000
- Expotruss X4-K40H L-2000
- Expotruss X4-K40H L-3000
- Expotruss X4-K40H Boxcorner
- Expotruss X4-K40 / 30 Pins / Clips ****Set 200 Pieces****
- Expotruss X4-K40H BC m-connector ****Set 56 Pieces****



Expotruss X4-K100-black

- Expotruss X4-K100 L-1000
- Expotruss X4-K100 L-2000
- Expotruss X4-K100 L-3000
- Expotruss X4-K100 4-Way Corner
- Expotruss X4-K100
- **Set 64x Pins / Clips; 4x Spigot****
- Expotruss X4-K100 ****Set 20x Spigot****

HOFFORK MLT TWO Pre Rig Truss

HOFFORK MLT TWO Pre Rig Truss, 2.400mm, Black incl. Dolly, 4x TrussPin & R-Clip



HOFFORK 350-4

- HOF 350-4-black-L390
- HOF 350-4-black-L2400
- HOF 350-4-black-L1243
- HOF 350-4-black-L666
- HOF 350-4-silver-L2400
- HOF 350-4-silver-L1243



Prolyte S52F - black

Prolyte S52F - L240



Image Similar



Machine	Chain Hoist D8 2t
Manufacturer	Chainmaster
Type	Electric Chain Hoist
Capacity	2.000kg
Strang/m	2 / 24m
m/min	4
Connection	CEE 16 / 4
Weight	86,8kg
Special	2 Falls



Image Similar



Machine	Chain Hoist D8-Plus 1000kg
Manufacturer	Chainmaster
Type	Electric Chain Hoist
Capacity	1.000kg
Strang/m	2 / 24m
m/min	4
Connection	CEE 16 / 4
Weight	90kg
Special	2 DC Brakes, 2 Falls



Machine	Chain Hoist D8 1000kg -50 m
Manufacturer	Chainmaster
Type	Electric Chain Hoist
Capacity	1.000kg
Strang/m	1 / 50m
m/min	4
Connection	CEE 16 / 4
Weight	83kg
Special	Extra Long Chain



Machine	Chain Hoist D8 1000kg
Manufacturer	Chainmaster
Type	Electric Chain Hoist
Capacity	1.000kg
Strang/m	1 / 24m
m/min	4
Connection	CEE 16 / 4
Weight	54kg
Special	Patented Friction Clutch



Image Similar



Chain Hoist D8-Plus 750kg

Machine	
Manufacturer	Chainmaster
Type	Electric Chain Hoist
Capacity	750kg
Strang/m	1 / 24m
m/min	4
Connection	16A 4 pol
Weight	65kg



Image Similar



Chain Hoist D8-Plus 500kg

Machine	
Manufacturer	Chainmaster
Type	Electric Chain Hoist
Capacity	500kg
Strang/m	1 / 24m
m/min	4
Connection	CEE 16 / 4
Weight	57kg
Special	2 DC Brakes, 2 Falls



Image Similar



Chain Hoist D8-Plus 160kg

Machine	
Manufacturer	Chainmaster
Type	Electric Chain Hoist
Capacity	160kg
Strang/m	1 / 18m
m/min	4
Connection	CEE 16 / 4
Weight	22kg
Special	Small and Light



Image Similar



Chain Hoist D8-Plus 250kg / 320kg

Machine	
Manufacturer	Chainmaster
Type	Electric Chain Hoist
Capacity	250kg / 320kg
Strang/m	1 / 18m
m/min	4
Connection	CEE 16 / 4
Weight	32kg / 36kg
Special	2 DC Brakes, 2 Falls



Machine	D8Plus Ultra 250kg
Manufacturer	ChainMaster
Type	Electric Chain Hoist
Capacity	250kg
Strang/m	1 / 18
m/min	4
Connection	CEE 16 / 4
Weight	19,2kg



Machine	D8Plus Ultra 500kg
Manufacturer	ChainMaster
Type	Electric Chain Hoist
Capacity	500kg
Strang/m	1 / 18
m/min	4
Connection	CEE 16 / 4
Weight	33,25g



Machine	D8Plus Ultra 1.000kg
Manufacturer	ChainMaster
Type	Electric Chain Hoist
Capacity	1.000kg
Strang/m	1 / 24
m/min	4
Connection	CEE 16 / 4
Weight	75kg



Machine	D8Plus Ultra 2.000kg
Manufacturer	ChainMaster
Type	Electric Chain Hoist
Capacity	2.000kg
Strang/m	1 / 23
m/min	4
Connection	CEE 16 / 4
Weight	160,6kg



Distribution **32-Way Controller**

Manufacturer	LLT
Outlet	8x HAN
Features	Motor-Circuit Switch per Channel, Rotary Field Check, Contactor, Kill Switch, Connectable
Power Connection	CEE 125A
Power Consumption	48kW
Weight	198,5kg



Distribution **8-Way Controller**

Manufacturer	LLT
Outlet	2x HAN16



Distribution **8-Way Controller**

Manufacturer	Chainmaster
Outlet	8x CEE + 2x HAN16



Distribution **SWL DC24 HP
24-way Controller**

Distribution	
Manufacturer	SWL
Outlet	6x HAN 16
Including	HR24 hand remote
Power Connection	CEE125A 3 phase > 2x63A 3 phase / RCD
Power Consumption	60kW
Weight	165kg
Special	2x SWL DC12HP



Your Shop for Used Event Equipment



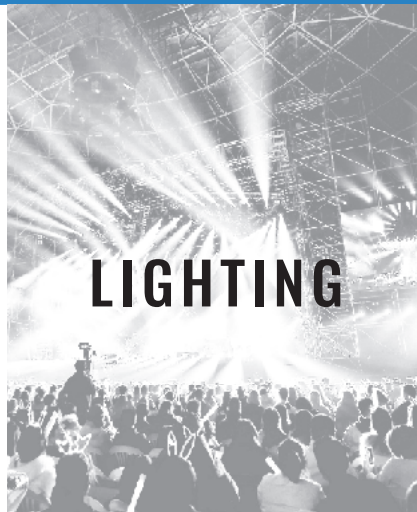
www.rudideluxe.de



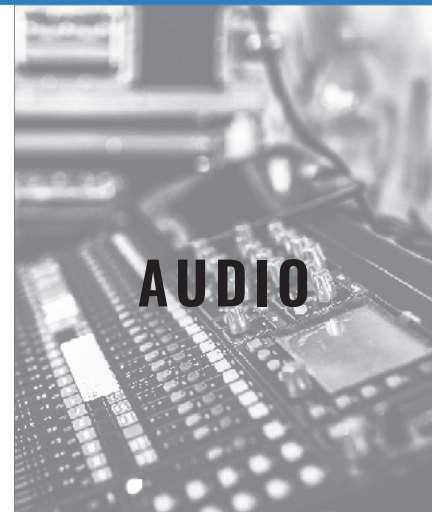
sales@niclen.de



+49 231 99961 750



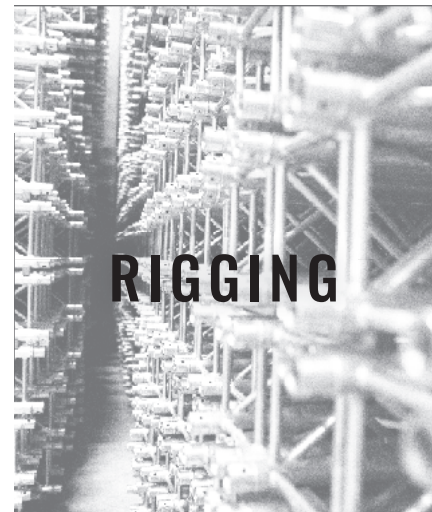
LIGHTING



AUDIO



VIDEO



RIGGING



Distribution

SWL DC12 HP 12-way Controller

Manufacturer	SWL
Outlet	3x 16 pol Harting
Including	HR 12
Power Connection	CEE 63A + Adapter CEE 32 > CEE 63
Power Consumption	30kW
Weight	95kg
Special	Linkbar



Distribution

SWL DC4 HP 4-way Controller

Manufacturer	SWL
Outlet	1x 16 pol Harting
Including	HR 4
Power Connection	16A CEE
Power Consumption	9kW
Weight	52kg
Special	Linkbar



Distribution

SWL TI 48 inkl. TR96 Touchremote

Manufacturer	SWL
Outlet	4x 40 pol Harting
Including	TR 96
Power Connection	Schuko
Power Consumption	60W
Weight	62kg
Special	Able to Handle up to 48 Channels



Distribution

SWL DC8HP

Manufacturer	SWL
Outlet	2x 16 pol Harting
Including	HR 8
Power Connection	32A CEE
Power Consumption	18kW
Weight	66kg



Distribution	SWL WR12
Manufacturer	SWL
Frequency Range	434 MHz
Applicable	DC4HP, DC8HP, DC12HP
Special	Wireless remote control



Chainmaster 1 Channel Control

Chainmaster 32 Way-Remote Control



Chainhoist Cabel Systems CEE 16A 4Pin

Hoistcabel Set 1: 8x 5m; 8x 10m; 8x 15m;
2x HAN16 20m;
2x Hoist Breakout (Rigg)

Hoistcabel Set 2: 25x 10m; 25x 15m

Hoistcabel Set 3: 25x 25m

CEE 4x / f (rigg) > Hoist Breakout HAN16 E / m >
Set 4 Pieces



Image Similar



Manual Hoist

Manual Hoists 1.000kg / 10m Chain



Monobloq

HoF Monobloq 8mm max. Load 7kN Steel 10m



Image Similar

Rigging Accessories

Baseplate with Mini-TV Connection

Steel 12mm 75cm **Set 30 Pieces**

Steel 12mm 75cm **Set 60 Pieces**

Steel 12mm 100cm **Set 30 Pieces**

Steel 12mm 100cm **Set 60 Pieces**

Steel 12mm 150cm **Set 30 Pieces**

Steel 12mm 150cm **Set 60 Pieces**

Steel 12mm 200cm **Set 30 Pieces**

Steel 12mm 200cm **Set 60 Pieces**

Steel 12mm 300cm **Set 30 Pieces**

Steel 12mm 300cm **Set 60 Pieces**

Steel 12mm 450cm **Set 30 Pieces**

Steel 12mm 600cm **Set 30 Pieces**

Steel 12mm 900cm **Set 30 Pieces**

Chainclutch 8mm 300cm **Set 25 Pieces**

Beamclamp 3 T 80-320mm **Set 4 Pieces**

Shackle 3,25t **Set 200 Pieces**

Oring Kit (100x18mm, 135x75mm 3,15t)
Set 100 Pieces

Steelflex/Roundsling AL 1m **Set 30 Pieces**

Steelflex/Roundsling AL 1m **Set 60 Pieces**

Steelflex/Roundsling AL 1,5m **Set 30 Pieces**

Steelflex/Roundsling AL 1,5m **Set 60 Pieces**

Steelflex/Roundsling AL 2m **Set 30 Pieces**

Steelflex/Roundsling AL 2m **Set 60 Pieces**

Round Sling AL 100cm 2t

Round Sling AL 150cm 2t

Round Sling AL 200cm 2t

Round Sling AL 300cm 2t

Swivel Coupler 500kg/50mm 360° silver
set 15 Pieces

EXPANDING THE EXPERIENCE³



QDX



ENCORE3



I600

At Barco, we help roadies, artists and creatives offer stunning visual experiences in cities, at events, in theme parks or museums.



Meet the QDX, ENCORE3 and I600 at
www.barco.com/entertainment

BARCO



LED Technology **AX1.5 Pro**

Manufacturer	Absen
Pixel Pitch	1,5mm
Brightness	1000cd/m ²
Panel Size	610x343x80mm
Panel Weight	9,2kg
Application	Indoor



LED Technology **PL2.5 Pro V2**

Manufacturer	Absen
Pixel Pitch	2,5mm
Brightness	1.200cd/m ²
Panel Size	500x500x78mm
Panel Weight	7,5kg
Application	Indoor



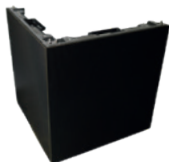
LED Technology **PL2.9 V10**

Manufacturer	Absen
Pixel Pitch	2,9mm
Brightness	1.000cd/m ²
Panel Size	500x500x88mm
Panel Weight	8kg
Application	Indoor



LED Technology **PL4.8 Pro (XL)**

Manufacturer	Absen
Pixel Pitch	4,8mm
Brightness	4.500cd/m ²
Panel Size	500x500x87mm 500x1.000x87mm
Panel Weight	10,4kg 14kg
Application	Indoor/Outdoor



LED Technology **Absen PL2.5 Pro V2 Corner Unit**

Manufacturer	Absen
--------------	-------



LED Technology **PL4.8W Plus V2 (XL)**

Manufacturer	Absen
Pixel Pitch	4,8mm
Brightness	4.500cd/m ²
Panel Size	500x500x78 mm 500x1.000x78 mm
Panel Weight	8kg 13kg
Application	Indoor/Outdoor



Matching stands and rigging accessories available for all LED walls!

LED Technology	MX40 Pro
Manufacturer	NovaStar
Load capacity	9.000.000px
Inputs	3x HDMI2.0, 1x DP1.2, 1x 12G-SDI, 1x RJ45 (Ctrl), 1x GenLock
Outputs	3x HDMI2.0 (loop), 1x 12G-SDI (loop), 1x SPDIF, 2x RJ45 (Ctrl), 1x Genlock (loop) 20x RJ45 EtherCon Gigabit Ethernet (650.000px@8bit, 60Hz), 4x SFP 10G optical (in or out)

LED Technology	MCTRL660pro
Manufacturer	NovaStar
Load capacity	2.600.000px
Inputs	1x SL-DVI, 1x HDMI1.4a, 1x 3G-SDI, 1x USB-B, 1x RJ45 EtherCon (Ctrl), 1x GenLock
Outputs	1x SL-DVI (loop), 1x HDMI1.4a (loop), 3G-SDI (loop), 1x HDMI1.4a (Monitoring), 1x USB-A, 1x GenLock (loop) 6x RJ45 EtherCon Gigabit Ethernet (650.000px@8bit, 60Hz), 2x SFP 10G optical (in or out)

LED Technology	MX30
Manufacturer	NovaStar
Load capacity	6.500.000px
Inputs	1x HDMI2.0, 1x HDMI1.4, 1x DP1.1, 2x 3G-SDI, 1x RJ45 (Ctrl), 1x GenLock
Outputs	1x HDMI2.0 (loop), 1x HDMI1.4 (loop), 2x 3G-SDI (loop), 1x SPDIF, 2x RJ45 (Ctrl), 1x Genlock (loop) 10x RJ45 EtherCon Gigabit Ethernet (650.000px@8bit, 60Hz), 2x SFP 10G optical (in or out)

LED Technology	MCTRL660
Manufacturer	NovaStar
Load capacity	8.850.000px
Inputs	1x SL-DVI, 1x HDMI1.4a, 1x 3G-SDI, 1x USB-B, 1x RJ45 EtherCon (Ctrl), 1x GenLock
Outputs	1x SL-DVI (loop), 1x HDMI1.4a (loop), 3G-SDI (loop), 1x HDMI1.4a (Monitoring), 1x USB-A, 1x GenLock (loop) 6x RJ45 EtherCon Gigabit Ethernet (650.000px@8bit, 60Hz), 2x SFP 10G optical (in or out)

LED Technology	MCTRL4K
Manufacturer	NovaStar
Load capacity	8.850.000px
Inputs	2x DL-DVI, 1x HDMI2.0, 1x DP1.2, 1x USB-B, 1x RJ45 EtherCon (Ctrl), 1x GenLock (loop)
Outputs	1x USB-A, 1x Genlock 16x RJ45 EtherCon Gigabit Ethernet (650.000px@8bit, 60Hz), 4x SFP 10G optical (in or out)



3DLP® Projector **PT-DZ13K**

Manufacturer	Panasonic
Resolution	1.920x1.200px
Brightness	12.000 Lumens



3DLP® Projector **Boxer 4K30**

Manufacturer	CHRISTIE®
Resolution	4.096x2.160px
Brightness	30.000 Lumens



3DLP® Projector **PT-RZ21K**

Manufacturer	Panasonic
Resolution	1.920x1.200px
Brightness	20.000 Lumens



3DLP® Projector **PT-RQ35**

Manufacturer	Panasonic
Resolution	3.840x2.400px
Brightness	32.000 Lumens



3DLP® Projector **PT-RZ31K**

Manufacturer	Panasonic
Resolution	1.920x1.200px
Brightness	30.000 Lumens



3DLP® Projector **Griffyn 4K32-RGB**

Manufacturer	CHRISTIE®
Resolution	4.096x2.160px
Brightness	34.000 Lumens



LCD Projector **I600-4K15**

Manufacturer	Barco
Resolution	3.840x2.400px
Brightness	14.000 Lumens



LCD Projector **EB-PU2220**

Manufacturer	Epson
Resolution	1.920x1.200px
Brightness	20.000 Lumens



All matching lenses available!



1DLP® Projector **PT-RZ120**

Manufacturer	Panasonic
Resolution	1.920x1.200px
Brightness	12.500 Lumens



LCD Projector **PT-VZ580**

Manufacturer	Panasonic
Resolution	1.920x1.200px
Brightness	5.000 Lumens



1DLP® Projector **PT-RZ990**

Manufacturer	Panasonic
Resolution	1.920x1.200px
Brightness	10.000 Lumens



1DLP® Projector **PT-DZ770**

Manufacturer	Panasonic
Resolution	1.920x1.200px
Brightness	7.000 Lumens



Accessories for rigging available.



All projectors come in rental frames. Different lenses are available in large quantities.

Lenses for Panasonic 1DLP® Projectors



Lens	Projection Ratio
ET-DLE020	0,28-0,299:1
ET-DLE035	0,38:1
ET-DLE055	0,8:1
ET-DLE060	0,6-0,8:1
ET-DLE085	0,8-1,0:1
ET-DLE105	1,0-1,3:1
ET-DLE150	1,3-1,9:1
ET-DLE170	1,7-2,4:1
ET-DLE250	2,3-3,6:1
ET-DLE350	3,6-5,4:1
ET-DLE450	5,4-8,6:1



Also compatible
with NEC PX1004!

Lenses for Panasonic 3DLP® Projectors



Lens	Projection Ratio
ET-D75LE95	0,39:1 (4K) 0,36:1 (WUXGA)
ET-D75LE50	0,7:1
ET-D75LE6	0,9-1,1:1
ET-D75LE10	1,3-1,7:1
ET-D75LE20	1,7-2,4:1
ET-D75LE30	2,4-4,7:1
ET-D75LE40	4,6-7,4:1
ET-D75LE8	7,3-13,8:1

Lenses for CHRISTIE® Boxer, Griffyn 4K32-RGB, D4K40-RGB and 4K 3DLP® Projectors



Lens	Projection Ratio
UST 4K	0,38:1
High Brightness Lens	0,72:1
High Brightness Lens	0,9:1
High Brightness Lens	1,13-1,31:1
High Brightness Lens	1,13-1,66:1
High Brightness Lens	1,31-1,63:1
High Brightness Lens	1,63-2,17:1
High Brightness Lens	1,99-2,71:1
High Brightness Lens	2,71-3,89:1
High Brightness Lens	3,89-5,43:1
High Brightness Lens	4,96-7,69:1

Lenses for Epson LCD Projectors



Lens	Projection Ratio
ELPLX02WS	0,35:1
ELPLU03S	0,48-0,57:1
ELPLU04	0,64-0,77:1
ELPLW08	0,86-1,21:1
ELPLW05	1,04-1,46:1
ELPLW06	1,19-1,62:1
ELPLM15	1,57-2,56:1
ELPLM10	2,42-3,71:1
ELPLM11	3,54-5,41:1
ELPLL08	5,27-7,41:1

AV Stumpfl® Monoblox® Front and Rear Projection Screens



Projection Screen	Format
386x294cm	4:3
447x340cm	4:3
508x386cm	4:3
630x477cm	4:3
752x569cm	4:3
386x226cm	16:9
447x260cm	16:9
508x294cm	16:9
630x363cm	16:9
752x431cm	16:9

AV Stumpfl® Fullwhite® Front Projection Screens



Projection Screen	Format
360x203cm	16:9
460x259cm	16:9
560x315cm	16:9
360x225cm	16:10
400x250cm	16:10
500x313cm	16:10



Suitable screen system legs available.



PREMIUM QUALITY PROJECTION SCREENS

Made in Austria

UNSER POWERHOUSE.
PIXERA four RS



AV Stumpfl® Vario® Front Projection Screens



Projection Screen	Format
210x160cm	4:3
240x180cm	4:3
280x160cm	16:9
280x210cm	4:3
300x173cm	16:9
320x245cm	4:3
400x230cm	16:9
400x300cm	4:3
500x210cm	21:9
500x290cm	16:9
600x210cm	Panorama
600x340cm	16:9
600x450cm	4:3
700x300cm	Panorama
700x395cm	16:9
800x340cm	Panorama
800x450cm	16:9
800x600cm	4:3
900x300cm	Panorama
900x450cm	Panorama
1.000x300cm	Panorama
1.000x571cm	16:9
1.200x400cm	Panorama

AV Stumpfl® Vario® Rear Projection Screens

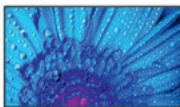


Projection Screen	Format
240x180cm	4:3
280x210cm	4:3
300x173cm	16:9
400x230cm	16:9
400x300cm	4:3
500x290cm	16:9
600x340cm	16:9
600x450cm	4:3
700x395cm	16:9
800x450cm	16:9

AV Stumpfl® MonoClip® Front and Rear Projection Screens

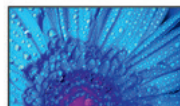


Projection Screen	Format
238x143cm	16:9
286x170cm	16:9
345x203cm	16:9
392x230cm	16:9
447x260cm	16:9
508x294cm	16:9
569x329cm	16:9
691x397cm	16:9
752x431cm	16:9



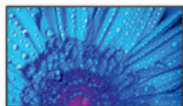
Large Format Display **MultiSync® M491**

Manufacturer	NEC
Size	49"
Resolution	UHD (3.840x2.160px)



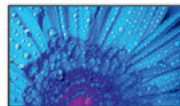
Large Format Display **MultiSync® M431**

Manufacturer	NEC
Size	43"
Resolution	UHD (3.840x2.160px)



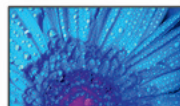
Large Format Display **MultiSync® M551 MPI4**

Manufacturer	NEC
Size	55"
Resolution	UHD (3.840x2.160px)



Large Format Display **MultiSync® M551**

Manufacturer	NEC
Size	55"
Resolution	UHD (3.840x2.160px)



Large Format Display **MultiSync® M651**

Manufacturer	NEC
Size	65"
Resolution	UHD (3.840x2.160px)





Large Format Display **MultiSync® V754Q**

Manufacturer	NEC
Size	75"
Resolution	UHD (3,840x2,160px)



Large Format Display **MultiSync® M751**

Manufacturer	NEC
Size	75"
Resolution	UHD (3,840x2,160px)



Large Format Display **MultiSync® V984Q**

Manufacturer	NEC
Size	98"
Resolution	UHD (3,840x2,160px)



Wall mounts and design stands available.



Large Format Display **MultiSync® M981**

Manufacturer	NEC
Size	98"
Resolution	UHD (3,840x2,160px)



Large Format Display **MultiSync® V864Q**

Manufacturer	NEC
Size	86"
Resolution	UHD (3,840x2,160px)





Touch Display

Manufacturer	NEC
Size	50"
Resolution	UHD (3.840x2.160px)

MultiSync® ME501 IR



Touch Display

Manufacturer	NEC
Size	55"
Resolution	UHD (3.840x2.160px)

MultiSync® ME551 IR



Touch Display

Manufacturer	NEC
Size	65"
Resolution	UHD (3.840x2.160px)

MultiSync® CB651Q-2



Touch Display

Manufacturer	NEC
Size	75"
Resolution	UHD (3.840x2.160px)

MultiSync® CB751Q



Desktop Display

Manufacturer	DELL
Size	27"
Resolution	UHD (3.840x2.160px)

U2723QE

Audipack Stands



Type	Load Capacity	max. Display Size	Height/ Dimensions (WxDxH)	Extras
Audipack 390902BK - MKII	85kg	86"	2,02m	Available on Wheels
Audipack 390921BK Monitoring Floor Stand on Wheels	60kg	55"	0,59m	
Audipack 390967 Wallmount	85kg	90"	340x18x198mm	Easy Installation
Audipack 391704 Monitoring Floor Stand on Wheels light	60kg	55"	600x68x655mm	
Audipack 392560 Trussmount	80kg	65"	530x30x450mm	Suitable for 300mm/400mm Truss
Audipack EC-916 Laptop Support	10kg			



Media Server

vx 2

Manufacturer

disguise

Features

Video Output:
2x HDMI 2.0
(4.096 x 2.160px max),
1 x DisplayPort 1.2 (GUI)
Diverse VFC Output Cards
Available, Video Input:
8x 3G-SDI (HD-BNC)



Media Server

4x4pro

Manufacturer

disguise

Features

Video Output:
4x DisplayPort 1.2
(max. 4.096x2.160px),
1x DisplayPort 1.2 (GUI)
Diverse VFC Output Cards
with up to 16 DVI or
SDI Outputs Available
Video Input: 4x HD-SDI or
2x 3G-SDI



Media Server

vx 4

Manufacturer

disguise

Features

Video Output:
4x HDMI 2.0
(4.096x2.160px max),
1 x DisplayPort 1.2 (GUI)
Diverse VFC Output Cards
Available, Video Input:
16x 3G-SDI (Mini-SDI)



Media Server

vx 4+

Manufacturer

disguise

Features

Video Output: 4x HDMI
2.0 (4.096 x 2.160px
max.), 1x DisplayPort 1.4
(GUI) Diverse VFC Output
Cards Available, Video
Input: 4x 12G-SDI or 16x
3G-SDI HD-BNC



Media Server

gx 3

Manufacturer

disguise

Features

Video Output: 3x HDMI
2.0 (4.096 x 2.160px
max.), 1x DisplayPort 1.4
(GUI) Diverse VFC Output
Cards Available, Video
Input: 3x 12G-SDI or 12x
3G-SDI HD-BNC



Workstation

Workstation X4000

Manufacturer

publitech

Features

Intel Core i9-10900X
1x 500GB System Disk
1x 3,2TB Media Disk
64GB RAM
Nvidia Quadro RTX A4000
Nvidia Quadro Sync II
2x 10Gbps Network
12G SDI Input Card



Media Server

Pixera four QUAD RS

Manufacturer

AV Stumpfl®

Features

- Redundant Power supply
- Hot-Plug
- AMD EPYC™ (24/48-Core, 2,85/4,0GHz, 128MB)
- 128GB RAM (ECC, 8 channels)
- 15,36 TB Data Storage U.2 SSD (Data U.2 SSD RAID0 Max. Read Rate: 10 GB/s)
- Physical Outputs:
- 4 x DisplayPort 1.4a
- Framelock and Genlock
- 4x 1Gbps Network
- 2x25Gbps Network
- 2x HDMI2.0 Input
- 4x12G-SDI I/O
- Dante Virtual soundcard
- Pixera SMPTE Interface In/Out



Media Server

Pixera two Quad RS Gen. 2

Manufacturer

AV Stumpfl®

Features

- Redundant Power supply
- Hot-Plug
- AMD EPYC™ (24/48-Core, 2,85/4,0GHz, 128MB)
- 128GB RAM (ECC, 8 channels)
- 15,36 TB Data Storage U.2 SSD (Data U.2 SSD RAID0 Max. Read Rate: 10 GB/s)
- Physical Outputs: 4 x DisplayPort 1.4a
- Framelock and Genlock
- 4x 1Gbps Network
- 2x25Gbps Network
- 1x HDMI2.0 Input
- 1x12G-SDI I/O or 4x3G-SDI I/O- Dante Virtual soundcard
- Pixera SMPTE Interface In/Out



Player

XD233

Manufacturer

BrightSign

Features

- Multi-Zone UHD Player, Network



Licenses

PIXERA

Resolume



Signal Sources	HDC-3200
Manufacturer	Sony
Features	Premium 4K/Full-HD Studio Camera Kit with High-Quality Accessories and Various Lenses



Camera	URSA Broadcast
Manufacturer	Blackmagic Design
Features	4K/Full HD Studio Camera Kit / Camcorder with High-Quality Accessories and Various Lenses



Camera	AG-CX350
Manufacturer	Panasonic
Features	4K Handheld Camera with 5-Axes Image Stabilizer



Signal Sources	AW-UE160
Manufacturer	Panasonic
Features	4K 60p/50p PTZ Camera for Highest Demands in the Studio, Production and Event Sector with 12G SDI, HDMI2.0 Fiber Optic Output



PTZ camera	AW-UE150
Manufacturer	Panasonic
Features	4K 60p/50p PTZ Camera for Highest Demands in the Studio, Production and Event Sector with 12G SDI, HDMI2.0 Fiber Optic Output



PTZ camera	AW-HE130
Manufacturer	Panasonic
Features	Full HD Camera with Integrated Pan-Tilt Function and Video Output via 3G SDI or Streaming via IP Transmission (Successor of the Proven AW-HE120)



Suitable controllers Panasonic AW-RP60 and AW-RP150 available.



Wireless Transmitter

Bolt PRO 1000 HD-SDI/HDMI

Manufacturer	Teradek
Features	Wireless Camera Radio Transmission System (Transmitter and Receiver)



Player/Recording Device

Ki Pro® Ultra plus

Manufacturer	AJA
Features	Multi-Channel HD Recorder 4K / Ultra HD / 2K / HD (Recorder and Player)



Streaming Solution

Web Presenter HD

Manufacturer	Blackmagic Design
Features	Complete Solution for (Live) Streaming to all Major Platforms

Preview Displays



Name Size

Panasonic BT-LH910	9"
Panasonic BT-LH1710	17"
Panasonic BT-LH1760	17"
Panasonic BT-LH2550	25"
MARSHALL QV171-HDSDI	17"



Preview Display

Q24

Manufacturer	Lilliput
Size	23,6"



Laptop

Precision 7730

Manufacturer

Dell

Features

17", Full HD,
Intel® Core™ i7-8750
6-Core, 16GB RAM, 512GB
SSD, Windows 10,
Office 2019 Home and
Business



Laptop

Precision 7550

Manufacturer

Dell

Features

15.6", Full HD,
Intel® Core™ i5-10400H,
16GB RAM, 256GB SSD,
Windows 10,
Office 2019 Home and
Business



Signal Processor	Spyder X80
Manufacturer	CHRISTIE®
Type	Multi-Screen Windowing Processor, 24 Inputs and 16 Outputs, 80 Megapixel Processing Power, Content in 4K



Signal Processor	Aquilon C-RS1+
Manufacturer	Analog Way®
Type	4K60 Capable Multiscreen Presentation System (1 VPU), In: 8x HDMI, 4x DP, 4x SDI, Out: 12x HDMI, 4x SDI



Signal Processor	Aquilon C-RS2+
Manufacturer	Analog Way®
Type	4K60 Capable Multiscreen Presentation System (2 VPU), In: 8x HDMI, 4x DP, 4x SDI, Out: 12x HDMI, 4x SDI



Signal Processor	Aquilon RS1
Manufacturer	Analog Way®
Type	4K60 Capable Multiscreen Presentation System (1 VPU), In: 8x HDMI, 4x DP, 4x SDI, Out: 8x HDMI



Signal Processor	Aquilon RS4
Manufacturer	Analog Way®
Type	4K60 Capable Multiscreen Presentation System (3 VPU), In: 12x HDMI, 8x DP, 4x SDI, Out: 16x HDMI



Signal Processor	Zenith 200
Manufacturer	Analog Way®
Type	4K60 Capable Multiscreen Presentation Switcher 16 Inputs, 6 Outputs



Signal Processor **Ascender 32-4K-PL**

Manufacturer Analog Way®

Type Seamless AV Processor
12-Channel, 4+1 Outputs



Signal Processor **Ascender LE32-4K**

Manufacturer Analog Way®

Type Seamless AV Processor
12-Channel, 4+1 Outputs



Signal Processor **Ascender 48-4K-PL**

Manufacturer Analog Way®

Type Seamless AV Processor
12-Channel, 4+1 Outputs,
Perspective Layers



Signal Processor **Pulse 4K**

Manufacturer Analog Way®

Type 4K60 Multilayer Video
Mixer and Scan Converter
with Dante™ Audio Net-
working



Signal Processor **Pulse² 3G**

Manufacturer Analog Way®

Type Multi-Scan Converter &
Seamless Switcher



Signal Processor

VIO 4K

Manufacturer

Analog Way®

Type

Multi-Format Converter
incl. Expansion Board with
HDMI 2.0, 12G SDI and
DisplayPort 1.2 Inputs and
Outputs



Signal Processor

ImagePRO-4K

Manufacturer

Barco

Type

Universal 4K Up / Downs-
caler, Scan Converter,
Format Converter



Signal Processor

S3-4K TCIO

Manufacturer

Barco

Type

Master Processor
14-Channel, 14 Outputs
incl. HDMI2.0/DP1.2/12G
SDI



Signal Processor

Encore 3

Manufacturer

Barco

Type

Image Processor
16 x 4K@60p Inputs
8 x 4K@60p PVW/PGM
12 Outputs 4:4:4
16 4K60 layers per screen



In addition, we offer common signal distributors
and amplifiers from well-known manufacturers.



Video Mixer

Manufacturer

Type

ATEM Mini Extreme ISO

Blackmagic Design

Video Mixer Streaming and Recording 9 Separate Video Streams in Real Time



Video Mixer

Manufacturer

Type

ATEM Television Studio Pro HD

Blackmagic Design

Multi-Scan Converter & Seamless Switcher



Video Mixer

Manufacturer

Type

ATEM Television Studio Pro 4K

Blackmagic Design

Multi-Scan Converter & Seamless Switcher with 8 Standards Converted 12G SDI Inputs



Video Mixer

Manufacturer

Type

ATEM 2 M/E Advanced Panel

Blackmagic Design

Control Panel for ATEM Production and TV Switcher



Video Mixer

Manufacturer

Type

ATEM 4 M/E Broadcast Studio 4K

Blackmagic Design

High-Performance 12G SDI Live Production Mixer with 4 M/E (20x In, 13x Out)



Video Mixer

Manufacturer

Type

ATEM Constellation 8K

Blackmagic Design

High-Performance 12G SDI Live Production Mixer with 4 M/E (40x In, 28x Out)



Network Technology **M4300-24X**
Manufacturer Netgear
Type 24 Ports 10G Switches



Network Technology **DGS-1224T**
Manufacturer D-LINK
Type 20 Ports Gigabit Switches



Network Technology **2530 24G PoE+**
Manufacturer HP
Type 24 Ports Gigabit Switches
with PoE+



Matrix

Manufacturer

Matrix Pro HD-/SDI Matrix 8x8

Barco

Type

Matrix with 8 HD-/SDI
Inputs and Outputs

Matrix

Manufacturer

Smart Videohub 40x40

Blackmagic Design

Type

Matrix with 40 6G SDI
Inputs and Outputs as well
as Mixed Format Support

Matrix

Manufacturer

Smart Videohub 12G 40x40

Blackmagic Design

Type

Matrix with 40 12G SDI
Inputs and Outputs as well
as Mixed Format Support

Matrix

Manufacturer

MX2 8x8 HDMI 2.0

Lightware

Type

Matrix with 8 HDMI 2.0
Inputs and Outputs as well
as EDID Management

Matrix

Manufacturer

MX2 16x16 HDMI 2.0

Lightware

Type

Matrix with 16 HDMI 2.0
Inputs and Outputs as well
as EDID Management

Matrix

Manufacturer

MX2 24x24 HDMI 2.0

Lightware

Type

Matrix with 24 HDMI 2.0
Inputs and Outputs as well
as EDID Management



Matrix

MX 8x8 DVI

Manufacturer

Lightware

Type

Matrix with 8 DVI Inputs and Outputs as well as EDID Management



Matrix

MX 16x16 DVI

Manufacturer

Lightware

Type

Matrix with 16 DVI Inputs and Outputs as well as EDID Management



Cueing System **MasterCue V6-L USB**
 Manufacturer Interspace Industries
 Type Wireless Presentation Devices



Cueing System **Cue4**
 Manufacturer Interspace Industries
 Type MasterCue Extension for Controlling up to 4 Computers



Cueing System **MicroCue3-L Dual Kit**
 Manufacturer Interspace Industries
 Type 2 MicroCue3 as a Set with 2 Laser Handsets



Cueing System **CueEther**
 Manufacturer Interspace Industries
 Type Ethernet Cueing System: Sender and (Wired) Receiver for MasterCue V5 and V6



Cueing System **MicroCue3**
 Manufacturer Interspace Industries
 Type Wireless Presentation Devices, also Available: MicroCue3-L



Intercom System

MCXD 32-Channel Desk Station

Manufacturer	Green-GO
Info	Desk Station, Direct Access to up to 32 Channels or Functions



Intercom System

MCXEXT 24-Channel 19" Extension for MCX

Manufacturer	Green-GO
Info	24-Channel Rack Extension



Intercom System

MCX 32-Channel 19" Rack Station 1HE

Manufacturer	Green-GO
Info	32-Channel Rack Station



Intercom System

MCXDEXT 24-Channel Extension for MCXD

Manufacturer	Green-GO
Info	24-Channel Desk Extension



Intercom System

INTERFACEX 19" Audio Interface

Manufacturer	Green-GO
Info	Combination of 2-Wire/4-Wire Interface to Connect with an Existing Matrix, Ring/Partyline Systems or other Analog Interfacing Products



Intercom System

BRIDGEX 19" Bridge Interface (4 Connections)

Manufacturer	Green-GO
Info	Combination of 2-Wire/4-Wire Interface to Connect with an Existing Matrix, Ring/Partyline Systems or other Analog Interfacing Products



Intercom System

BPX Beltpack

Manufacturer	Green-GO
--------------	----------

Info	Offers Comfortable and Direct Access to up to 4 Channels
------	--



Intercom System

WBPX Wireless Beltpack

Manufacturer	Green-GO
--------------	----------

Info	Based on DECT Wireless Technology in order to Communicate with the Green-GO WAA Antenna Spare Batteries Available
------	---



Intercom System

BC6 6-Way Battery Charger 19"

Manufacturer	Green-GO
--------------	----------

Info	Charges up to 6 Green-GO NRGF Batteries for Green-GO WBPX Wireless Beltpacks
------	--



Intercom System

WAA Wireless Antenna

Manufacturer	Green-GO
--------------	----------

Info	Connects a Green-GO WBPX Wireless Beltpack with a Green-GO System
------	---



Intercom System

DNTI Dante 4x4 Interface

Manufacturer	Green-GO
--------------	----------

Info	8x Dante™ Audio Stream (4x In, 4x Out)
------	--



Intercom System

BEACON

Manufacturer	Green-GO
--------------	----------

Info	Call Indicator, Compatible with the Green-GO Network
------	--



Intercom System

SW81 switch8 PoE + 1, 19"

Manufacturer

Green-GO

Info

Ethernet Switch, 9 LEDs
Provide Information about
Link and Data Presence



Intercom System

RDX Walkie-Talkie Interface

Manufacturer

Green-GO

Info

Integrates a Voice Radio
Channel from Commerci-
ally Available Radios into
the Green-GO System with
Push-to-Talk Support



Intercom System

DT 280 MKII Single-Ear Headset

Manufacturer

beyerdynamic

Info

Single-Ear Combined
Listening and Speaking,
200/80Ω



Intercom System

DT 290 MKII Headset

Manufacturer

beyerdynamic

Info

Combined Listening and
Speaking, 200/80Ω



Fiber Optic Cable

proFibre

Manufacturer	CONNEX
Lengths	100m, 150m, 200m, 300m



Fiber Optic Cable

DVI Fiber Optic Cables

Manufacturer	PureLink®
Lengths	30m, 50m

Fiber Optic Cable

Iron Fibre HDMI 2.0 4K60

Manufacturer	PureLink®
Lengths	50m, 100m

**CONNEX proFibre Converters**

Name	Version	Resolution
proFibre DVI Single	1x DVI Single Link	HDTV 1.080px, max. 1.900x1.200px (60Hz)
proFibre DVI Dual	2x DVI Single Link + 1x 10/100Mbit Ethernet	HDTV 1.080px, max. 1.900x 1.200px (60Hz)
proFibre HD/3G SDI	proFibre HD/3G SDI	HDTV 1.080px,
proFibre DisplayPort	1x DisplayPort 1.2	4K max. 4.096x2.160px (60Hz)
proFibre HDMI 2.0	1x HDMI 2.0 + 2x Gigabit	4K max. 4.096x2.160px (60Hz), 4:4:4, HDR
proFibre HDMI 2.0 Dual	2x HDMI 2.0 + 1x 10/100Mbit Ethernet	4K max. 4.096x2.160px (60Hz), 4:4:4, HDR

Video Technicians as Advisors

You need support in selecting and assembling the right video equipment?
It is up to you in which phase of a project you would like to include our team.
We can already support you in the planning and conception phase of your event
or take over the project management for the video segment on site.



Diameter of the Light Cone at the Following Distance

Scattering Angle of Light Cone	3m	6m	9m	12m	15m	20m	25m	30m	35m	40m	Distance for 3m Diameter
5°	0,3m	0,5m	0,8m	1m	1,3m	1,7m	2,2m	2,6m	3,1m	3,5m	34,4m
6°	0,3m	0,6m	0,9m	1,3m	1,6m	2,1m	2,6m	3,1m	3,7m	4,2m	28,6m
8°	0,4m	0,8m	1,3m	1,7m	2,1m	2,8m	3,5m	4,2m	4,9m	5,6m	21,5m
9°	0,5m	0,9m	1,4m	1,9m	2,4m	3,1m	3,9m	4,7m	5,5m	6,3m	19,1m
10°	0,5m	1,1m	1,6m	2,1m	2,6m	3,5m	4,4m	5,2m	6,1m	7m	17,1m
11°	0,6m	1,2m	1,7m	2,3m	2,9m	3,9m	4,8m	5,8m	6,7m	7,7m	15,6m
12°	0,6m	1,3m	1,9m	2,5m	3,2m	4,2m	5,3m	6,3m	7,4m	8,4m	14,3m
13°	0,7m	1,4m	2,1m	2,7m	3,4m	4,6m	5,7m	6,8m	8m	9,1m	13,2m
15°	0,8m	1,6m	2,4m	3,2m	3,9m	5,3m	6,6m	7,9m	9,2m	10,5m	11,4m
17°	0,9m	1,8m	2,7m	3,6m	4,5m	6,0m	7,5m	9m	10,5m	12m	10m
20°	1,1m	2,1m	3,2m	4,2m	5,3m	7,1m	8,8m	10,6m	12,3m	13,1m	8,5m
23°	1,2m	2,4m	3,7m	4,9m	6,1m	8,1m	10,2m	12,2m	14,2m	16,3m	7,4m
25°	1,3m	2,7m	4m	4,9m	6,7m	8,9m	11,1m	13,3m	15,5m	17,7m	6,8m
26°	1,4m	2,8m	4,2m	5,5m	6,9m	9,2m	11,5m	13,9m	16,2m	18,5m	6,5m
30°	1,6m	3,2m	4,8m	6,4m	8m	10,7m	13,4m	16,1m	18,8m	21,4m	5,6m
35°	1,9m	3,8m	5,7m	7,6m	9,5m	12,6m	15,8m	18,9m	22,1m	25,2m	4,8m
40°	2,2m	4,4m	6,6m	8,7m	10,9m	14,6m	18,2m	21,8m	25,5m	29,1m	4,1m
45°	2,5m	5,0m	7,5m	9,9m	12,4m	16,6m	20,7m	24,9m	29,0m	33,1m	3,6m
50°	2,8m	5,6m	8,4m	11,2m	14,0m	18,7m	23,3m	28,0m	32,6m	37,3m	3,2m
55°	3,1m	6,2m	9,4m	12,5m	15,6m	20,8m	26,0m	31,2m	36,4m	41,6m	2,9m
60°	3,5m	6,9m	10,4m	13,9m	17,3m	23,1m	28,9m	34,6m	40,4m	46,2m	2,6m
65°	3,8m	7,6m	11,5m	15,3m	19,1m	25,5m	31,9m	38,2m	44,6m	51m	2,4m
70°	4,2m	8,4m	12,4m	16,8m	21,0m	28,0m	35,0m	42,0m	49,0m	56,0m	2,1m

	Span (m)	3m	4m	5m	6m	7m	8m	9m	10m	11m	12m	13m	14m	15m	16m	17m	18m	19m	20m	
Prolyte X30D Triangular Truss 30cm	UDL*	443,7	248,1	157,6	108,4	78,7	59,5	46,3	36,8	29,8	24,5	20,4	17,1	14,5	12,3					
	CPL**	576,3	444,8	360,8	302,2	258,9	225,4	198,6	176,6	158,1	142,3	128,6	116,5	105,8	96,2					
Prolyte H30V Square Truss 30cm	UDL	649	485,3	387,1	321,6	255,6	194,4	152,4	122,3	100,1	83,2	70,1	59,6	51,2	44,3	38,6	33,8	29,8	26,3	
	CPL	1.668	1.298	1.074	914,4	794,4	700,6	625,2	563,2	511	466,5	428	394,3	364,5	337,8	313,8	292	272,2	253,9	
Expotruss X4-K30 (FD34) Square Truss 30cm	UDL	743,7	497,5	330,5	233,5	172,7	132,3	104,1	83,8	68,5	56,9	47,8	40,6	34,7	29,9	25,9	22,5	19,7	17,2	
	CPL	1.017	827,3	695,2	597,9	523	463,4	414,6	374	339,4	309,5	283,4	260,4	239,8	221,2	204,4	189	174,9	161,9	
Expotruss X4-K40H Square Truss 40cm	UDL	1.443	933,5	640,8	462,3	347	268,8	213,5	173,2	142,9	119,5	101,2	86,6	74,7	64,9	56,8	50	44,2	39,2	
	CPL	1.875	1.557	1.330	1.158	1.024	915,9	827	752,2	688,5	633,3	585	542,3	504,3	470	439	410,7	384,8	360,9	
Expotruss X4-G35 Square Truss 35cm	UDL	1.587	1.188	827,5	571,9	417,8	317,7	249,2	200,1	163,8	136,2	114,7	97,7	83,9	82,7	63,4	55,5	48,9	43,3	
	CPL	2.571	2.098	1.769	1.526	1.340	1.192	1.071	970,5	885,3	812	745,8	683,9	629,6	581,5	538,6	499,9	464,8	432,8	
Expotruss X4-G62 Square Truss 62cm	UDL	2.565	1.819	1.322	990	762,4	601,6	480,5	387,2	318,1	265,6	224,7	192,2	166,1	144,7	126,9	112	99,4	88,7	
	CPL	3.765	3.210	2.795	2.473	2.215	2.004	1.827	1.667	1.548	1.435	1.336	1.248	1.669	1.099	1.034	975,6	921,8	872,2	
Expotruss X4-K100 Rectangular Truss 58x100cm	UDL						1.440		1.148		835,7		607,9		460		358,7		286,2	
	CPL						5.880		5.157		4.513		4.000		3.570		3.196		2.862	

	Span (m)	2,4	3,6m	4,8m	6m	7,2m	8,4m	9,6m	10,8m	12m	13,2m	14,4m	15,6m	16,8m	18m	19,2m	20,4m	21,6m	
Prolyte S52F - L240	UDL*	1049,2	697,5	663,9	529,6	432,7	357,9	303,8	237,9	200,8	164,1	136,1	114,4	97,2	83,2	71,9	62,4	54,5	
	CPL**	2060,3	1895,7	1574,1	1253,4	1038,6	884,2	767,6	743,8	722,9	703,9	686,2	624,7	571,3	561,9	551,9	509,3	471,0	

* = Allowable uniformly distributed load (UDL) in kg/m

** = Allowable centre point load in kg (a point load that divides the span in 2 equal sections)

- Loading figures as provided are only meant as an indication. For more information and restrictions, please refer to the respective manufacturers loading tables.
- Loading figures are only valid for static loads.
- Loading figures are only valid for single spans with supports at both ends.
- All static systems, other than single spans, need an individual structural calculation. Please contact a structural engineer for assistance.
- Read the manufacturer's manual before assembling, using and loading the truss.

HOF MLT TWO

Permissible loadings without limit by deflection according DIN 13814 Fairground

Span		<i>Distributed Load</i>		<i>Deflection</i>		<i>Single load in every single crossing point</i>		<i>Deflection</i>	
m	ft	kg/m	lbs/ft	mm	inch	kg	lbs	mm	inch
4	13,1	1200	8679	14	0.55	420	3037	14	0.55
5	16,4	800	5786	22	0.87	420	3037	22	0.87
6	19,7	612	4426	31	1.22	420	3037	31	1.22
7	23,0	447	3233	42	1.65	391	2828	42	1.65
8	26,2	339	2451	49	1.93	271	1960	49	1.93
9	29,5	265	1916	58	2.28	198	1432	58	2.28
10	32,8	212	1533	83	3.27	176	1273	83	3.27
11	36,1	174	1258	100	3.94	120	867	100	3.94
12	39,4	145	1048	117	4.61	108	781	117	4.61
13	42,7	121	875	136	5.35	98	708	136	5.35
14	45,9	103	745	155	6.10	90	650	155	6.10
15	49,2	88	636	176	6.93	82	593	176	6.93

Harting, 16 Pin (Electrical Load Multicore)

Pin	Function 2,5q
1	L1
2	L2
3	L3
4	L4
5	L5
6	L6
7	-
8	-
9	N1
10	N2
11	N3
12	N4
13	N5
14	N6
15	-
16	-

Housing: Ground

Harting, 6 Pin (for 5kW Electrical Load Multicore)

Pin	Function
1	L1
2	N1
3	L2
4	N2
5	L3
6	N3

Harting, 16 Pin (for 2kW Electrical Load Multicore (Motormultis))

Pin	Function 2,5q
1	L1 hoist 1
2	L2 hoist 1
3	L3 hoist 1
4	L1 hoist 2
5	L2 hoist 2
6	L3 hoist 2
7	-
8	-
9	L1 hoist 3
10	L2 hoist 3
11	L3 hoist 3
12	L1 hoist 4
13	L2 hoist 4
14	L3 hoist 4
15	-
16	-

XLR / DMX Configuration

Pin	XLR-5	XLR-6 XLR-6
1	Ground	Ground
2	Data -	Data -
3	Data +	Data +
4	opt. 2 Link D -	-
5	opt. 2 Link D +	-

Subject to errors and technical changes.

ROBE[®]

iBOLT[™]

DOMINATE
THE SKY



This catalogue and therefore this advertisement are printed CO2-compensated. For more information, please contact NicLen.

